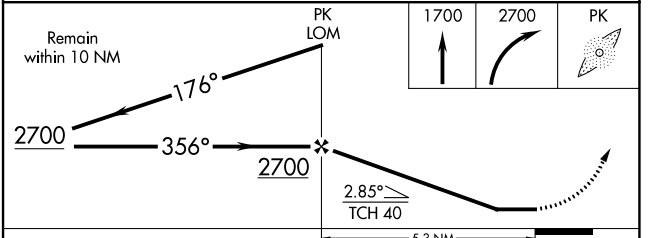
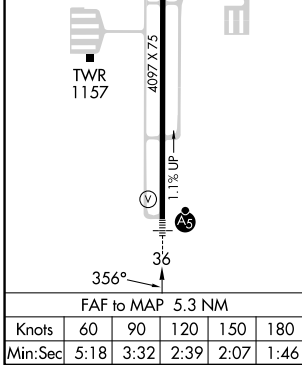
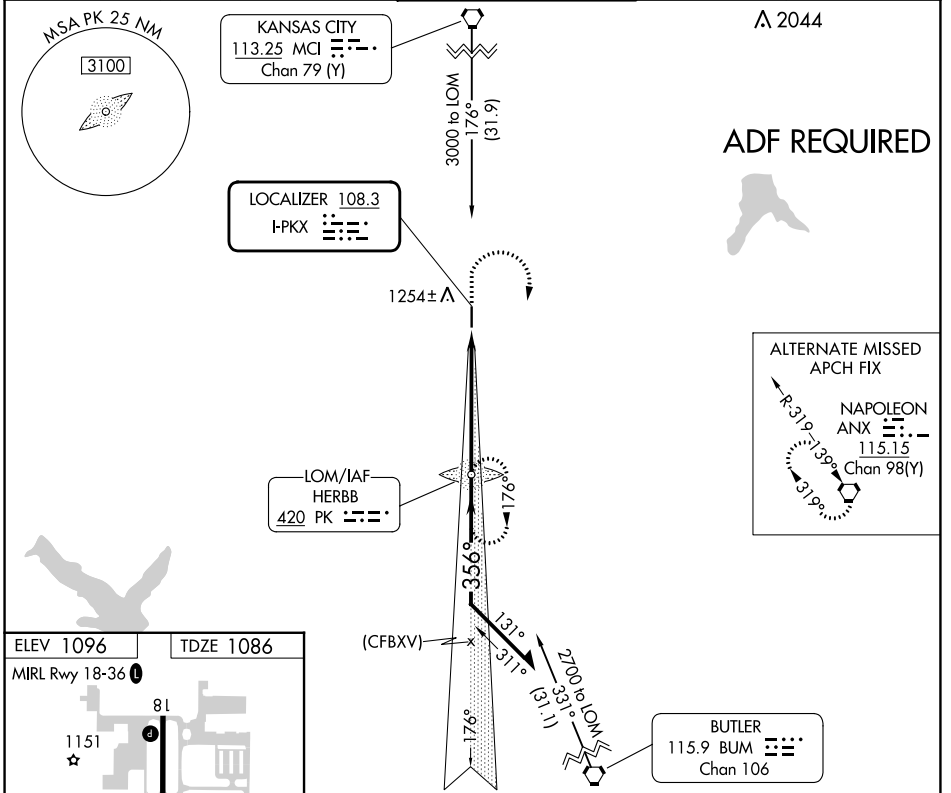


LOC I- PKX 108.3	APP CRS 356°	Rwy Idg 4097
		TDZE 1086
		Apt Elev 1096

LOC RWY 36

JOHNSON COUNTY EXEC (OJC)

NA Helicopter visibility reduction below 3/4 SM not authorized. For inoperative MALSRS, increase S-36 Cats A and B visibility 1/4 mile.	MALSRS 		MISSED APPROACH: Climb to 1700 then climbing right turn to 2700 direct HERBB LOM and hold.	
	ATIS 119.35	KANSAS CITY APP CON 118.9 251.075	EXECUTIVE TOWER* 126.0 (CTAF) 225.4	GND CON 121.6



CATEGORY	A	B	C	D
S-36	1580-3/4	494 (500-3/4)	1580-1 494 (500-1)	NA
CIRCLING	1620-1	524 (600-1)	1620-1 1/2 524 (600-1 1/2)	NA

NC-2, 13 JUN 2024 to 11 JUL 2024

NC-2, 13 JUN 2024 to 11 JUL 2024