

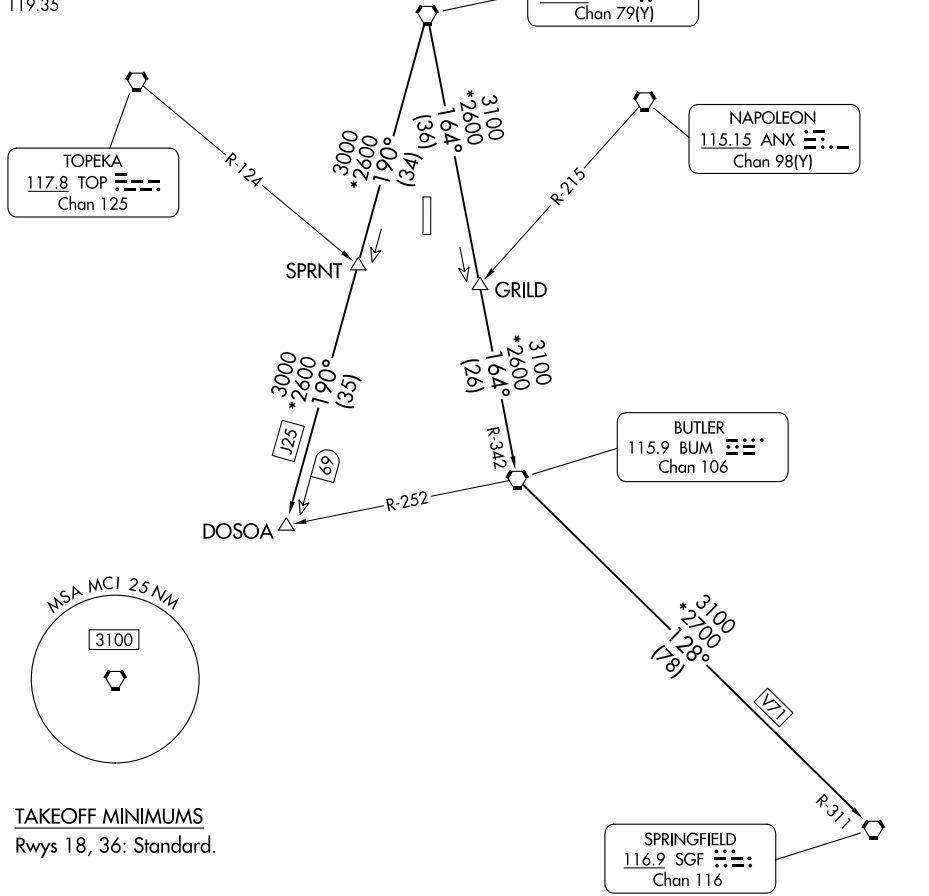
# RACER EIGHT DEPARTURE

AL-5687 (FAA)

KANSAS CITY DEP CON  
118.9 251.075  
ATIS  
119.35

RADAR required.

**TOP ALTITUDE:**  
**10000**



NC-2, 13 JUN 2024 to 11 JUL 2024

NC-2, 13 JUN 2024 to 11 JUL 2024

**TAKEOFF MINIMUMS**  
Rwys 18, 36: Standard.

NOTE: Chart not to scale.

**DEPARTURE ROUTE DESCRIPTION**

**TAKEOFF ALL RUNWAYS:** Climb on assigned heading for RADAR vectors to appropriate route. Maintain 10000 or as assigned by ATC, expect filed altitude 10 minutes after departure.

**BUTLER TRANSITION (RACER8.BUM):** From over MCI VORTAC on MCI R-164 and BUM R-342 to BUM VORTAC.

**DOSOIA TRANSITION (RACER8.DOSOIA):** From over MCI VORTAC on MCI R-190 to DOSOIA.

**SPRINGFIELD TRANSITION (RACER8.SGF):** From over MCI VORTAC on MCI R-164 and BUM R-342 to BUM VORTAC, then on BUM R-128 and SGF R-311 to SGF VORTAC.

# RACER EIGHT DEPARTURE