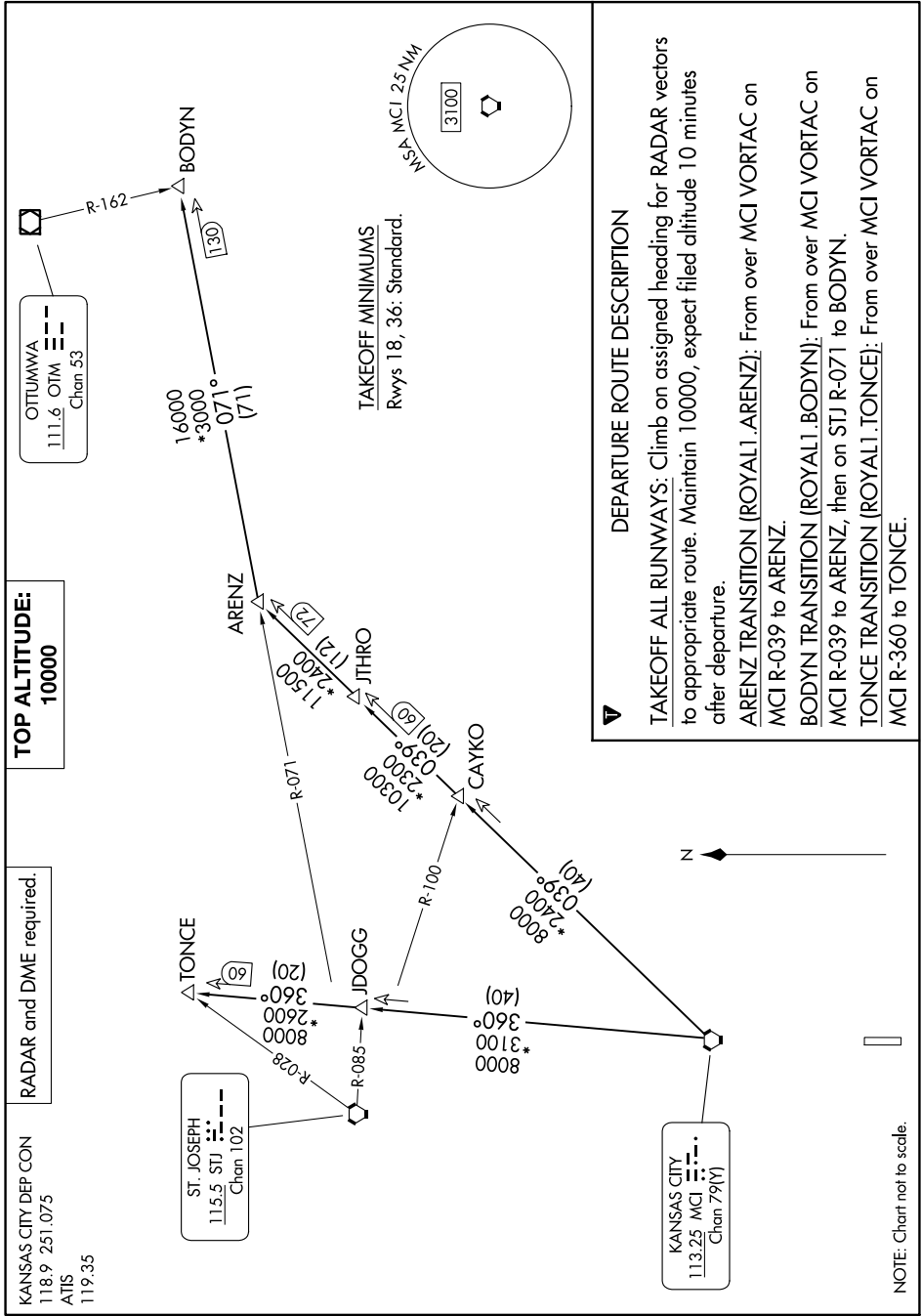


ROYAL ONE DEPARTURE

NC-2, 13 JUN 2024 to 11 JUL 2024



KANSAS CITY DEP CON
118.9 251.075
ATIS
119.35

RADAR and DME required.

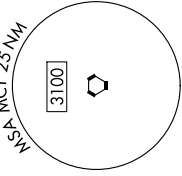
TOP ALTITUDE:
10000

OTTUMWA
111.6 OTM
Chan 53

ST. JOSEPH
115.5 STJ
Chan 102

KANSAS CITY
113.25 MCI
Chan 79(1)

TAKEOFF MINIMUMS
Rwys 18, 36: Standard.



DEPARTURE ROUTE DESCRIPTION

TAKEOFF ALL RUNWAYS: Climb on assigned heading for RADAR vectors to appropriate route. Maintain 10000, expect filed altitude 10 minutes after departure.

ARENZ TRANSITION (ROYAL1.ARENZ): From over MCI VORTAC on MCI R-039 to ARENZ.

BODYN TRANSITION (ROYAL1.BODYN): From over MCI VORTAC on MCI R-039 to ARENZ, then on STJ R-071 to BODYN.

TONCE TRANSITION (ROYAL1.TONCE): From over MCI VORTAC on MCI R-360 to TONCE.

NOTE: Chart not to scale.

NC-2, 13 JUN 2024 to 11 JUL 2024

ROYAL ONE DEPARTURE