

VORTAC SPI 112.7 Chan 74	APP CRS 041°	Rwy Idg TDZE Apt Elev	4000 593 594
--	------------------------	-----------------------------	---

VOR RWY 3
LOGAN COUNTY (AAA)

DME or RADAR required.

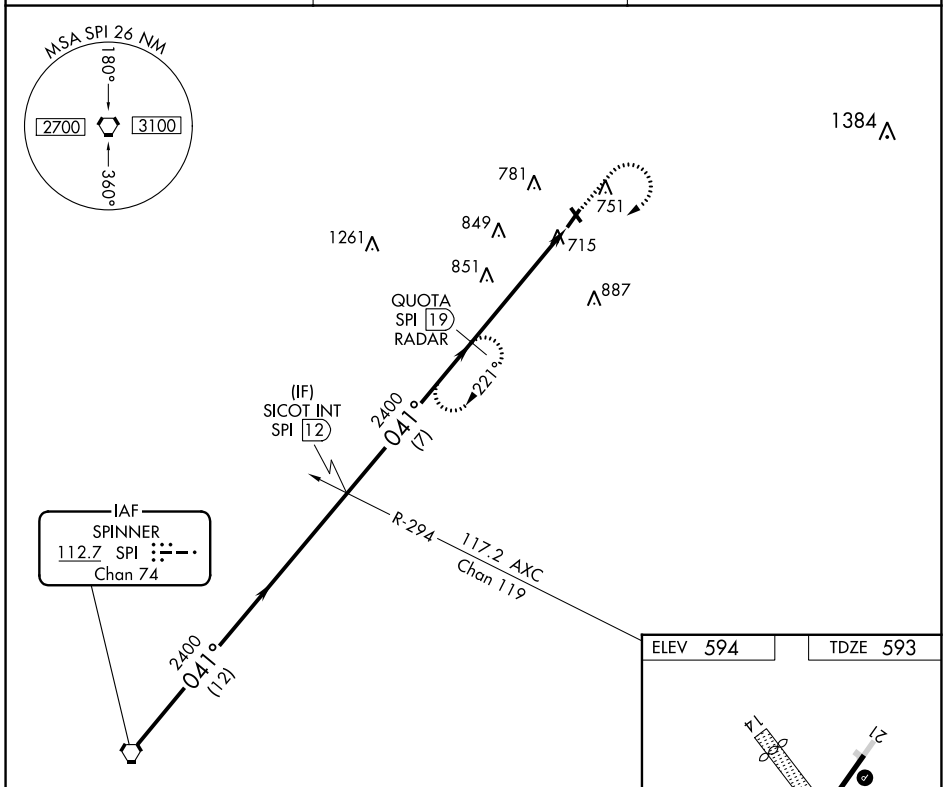
⚠ When local altimeter setting not received, use Springfield, IL altimeter setting and increase all MDAs 60 feet, increase Circling Cat C/D visibility ¼ SM. Circling NA to Rwy 14 and 32. Rwy 3 helicopter visibility reduction below ¾ SM NA.

MISSED APPROACH: Climb to 2000 then climbing right turn to 2400 via SPI R-041 to QUOTA/19 DME/RADAR and hold.

AWOS-3
118.775

SAINT LOUIS APP CON ★
126.15 323.0

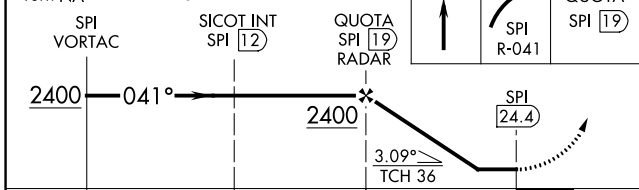
UNICOM
122.8 (CTAF)



EC-3, 13 JUN 2024 to 11 JUL 2024

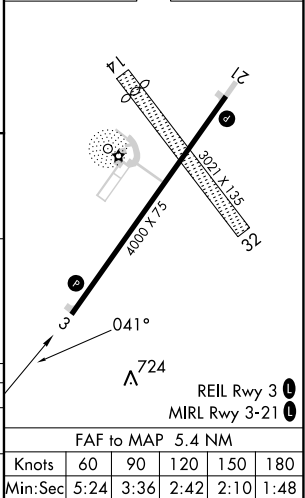
EC-3, 13 JUN 2024 to 11 JUL 2024

Procedure Turn NA VGSI and descent angles not coincident (VGSI Angle 3.50/TCH 26).



CATEGORY	A	B	C	D
S-3	1120-1 527 (600-1)	1120-1¼ 527 (600-1¼)	1120-1½ 527 (600-1½)	1120-1¾ 527 (600-1¾)
CIRCLING	1140-1 546 (600-1)	1140-1¼ 546 (600-1¼)	1280-2 686 (700-2)	1280-2¼ 686 (700-2¼)

ELEV 594	TDZE 593
----------	----------



FAF to MAP 5.4 NM					
Knots	60	90	120	150	180
Min:Sec	5:24	3:36	2:42	2:10	1:48