

WAAS CH <b>82107</b> <b>W28A</b>	APP CRS <b>283°</b>	Rwy Idg TDZE Apt Elev	<b>4800</b> <b>5813</b> <b>5885</b>
--	------------------------	-----------------------------	---

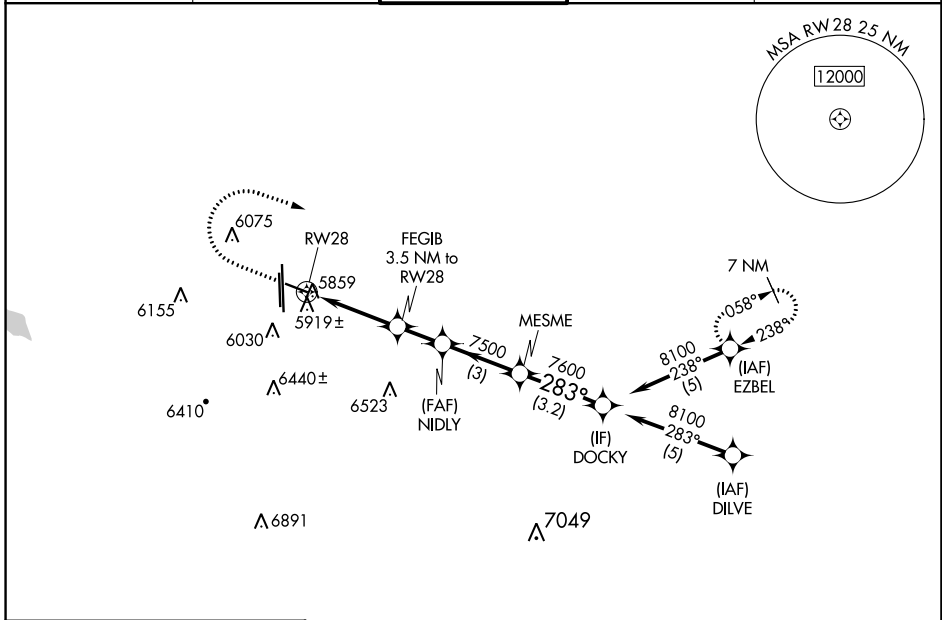
# RNAV (GPS) RWY 28

CENTENNIAL (APA)

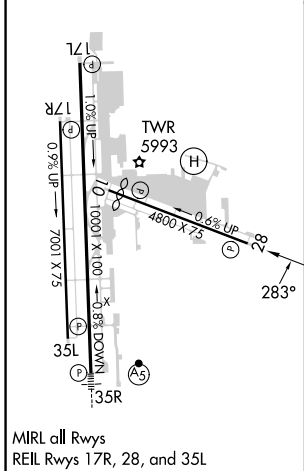
RNP APCH.  
 ▼ For uncompensated Baro-VNAV systems, LNAV/VNAV NA below -26°C or above 49°C. Rwy 28 helicopter visibility reduction below 3/4 SM NA. Circling Rwy 35L NA at night.

MISSED APPROACH: Climb to 6400 then climbing right turn to 9000 direct EZBEL and hold.

ATIS <b>120.3</b>	DENVER APP CON <b>132.75 269.3</b>	CENTENNIAL TOWER <b>118.9</b>	GND CON <b>121.8</b>	CLNC DEL <b>128.6</b>
----------------------	---------------------------------------	----------------------------------	-------------------------	--------------------------



ELEV <b>5885</b>	TDZE <b>5813</b>
------------------	------------------



	6400	9000	EZBEL	
	↑	↷	✧	
*LNAV only.				DOCKY
			NIDLY	MESME
			7500	7600
			6940*	7500
				8100
				GP 3.00°
				TCH 41
	1.3	2.2 NM	1.7 NM	3 NM
				3.2 NM
CATEGORY	A	B	C	D
LPV DA	6079-7/8 266 (200-7/8)			
LNAV/VNAV DA	6119-1 306 (300-1)			
LNAV MDA	6260-1	447 (400-1)	6260-1 3/8	447 (400-1 3/8)
CIRCLING	6400-1 515 (600-1)	6540-1 655 (700-1)	6740-2 1/2 855 (900-2 1/2)	6900-3 1015 (1100-3)

SW-1, 13 JUN 2024 to 11 JUL 2024

SW-1, 13 JUN 2024 to 11 JUL 2024