

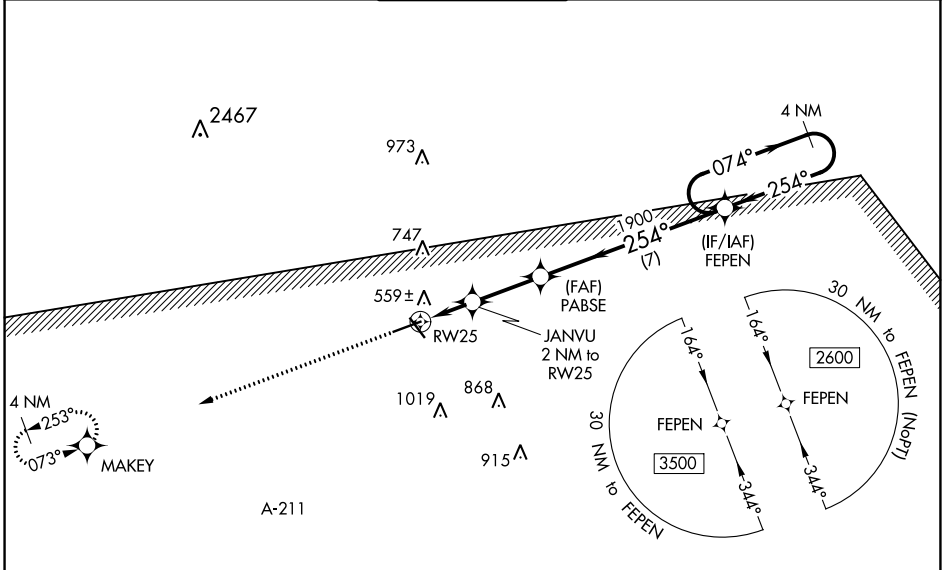
| | | | |
|--|------------------------|-----------------------------|---|
| WAAS CH 50137 W25A | APP CRS 254° | Rwy Idg TDZE Apt Elev | 6197 394 397 |
|--|------------------------|-----------------------------|---|

RNAV (GPS) RWY 25

TROY MUNI AT N KENNETH CAMPBELL FLD (TOI)

| | | |
|-----------|---|---|
| RNP APCH. | <p>▼ For uncompensated Baro-VNAV systems, LNAV/VNAV NA below -7°C (20°F) or above 54°C (130°F). Baro-VNAV and VDP NA when using Montgomery Rgnl (Dannelly Fld) altimeter setting. Rwy 25 helicopter visibility reduction below ¾ SM NA. Circling to Rwy 14, 32 NA at night. When local altimeter setting not received, use Montgomery Rgnl (Dannelly Fld) altimeter setting and increase LPV DA to 747 and all visibilities ¼ SM, LNAV/VNAV DA to 840 and visibilities ⅓ SM, and all MDA 100 feet; increase LNAV Cats C and D and Circling Cat C visibility ¼ SM.</p> | MISSED APPROACH: Climb to 2200 direct MAKEY and hold. |
|-----------|---|---|

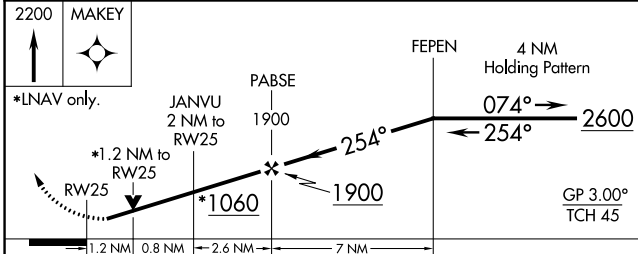
| | | | | |
|------------------------|---|---|-------------------------------|------------------------|
| ATIS 120.925 | CAIRNS APP CON ★ 121.1 319.25 | TROY TOWER ★ 124.3 (CTAF) 0 306.9 | GND CON 121.9 294.7 | UNICOM 122.8 |
|------------------------|---|---|-------------------------------|------------------------|



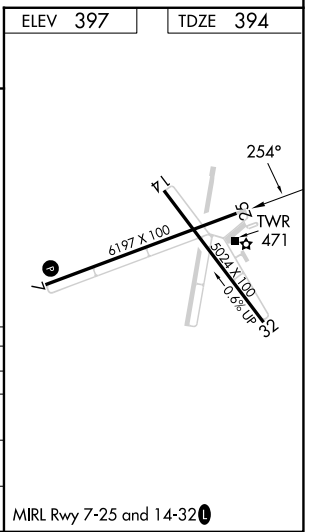
SE-4, 13 JUN 2024 to 11 JUL 2024

SE-4, 13 JUN 2024 to 11 JUL 2024

| | |
|-----------------|-----------------|
| ELEV 397 | TDZE 394 |
|-----------------|-----------------|



| CATEGORY | A | B | C | D |
|--------------|-----------|-------------|--------------------------------|------------------------|
| LPV DA | 647-7/8 | | 253 (300-7/8) | |
| LNAV/VNAV DA | 740-1 1/8 | | 346 (400-1 1/8) | |
| LNAV MDA | 820-1 | 426 (500-1) | 820-1 1/4 | 426 (500-1 1/4) |
| CIRCLING | 1000-1 | 603 (700-1) | 1300-2 3/4 903 (1000-2 3/4) | 1380-3 983 (1000-3) |



RNAV (GPS) RWY 25

MIRL Rwy 7-25 and 14-32