

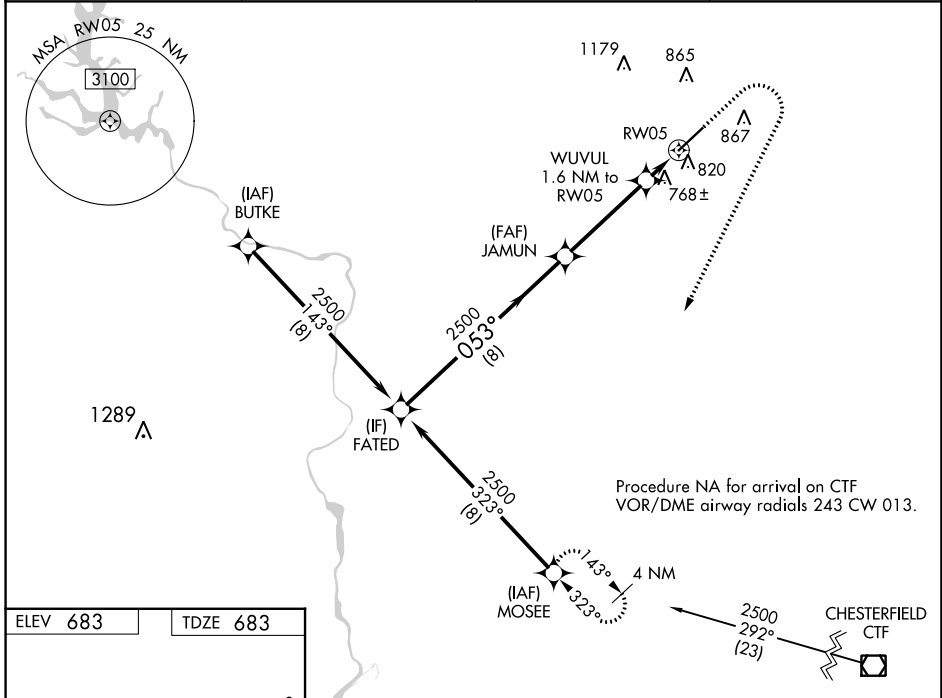
WAAS CH 66002 W05A	APP CRS 053°	Rwy Idg TDZE Apt Elev	7001 683 683
--	------------------------	-----------------------------	---

RNAV (GPS) RWY 5

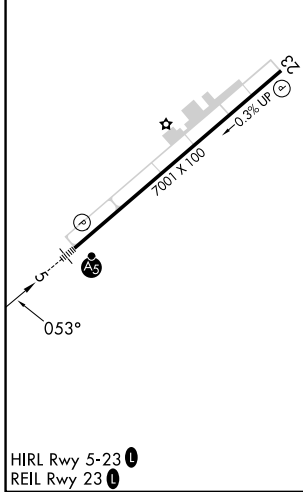
CHARLOTTE/MONROE EXEC (EQY)

RNP APCH-GPS.	MALSR	MISSED APPROACH: Climb to 1140 then climbing right turn to 2500 direct MOSEE and hold.
Rwy 5 helicopter visibility reduction below 3/4 SM NA. For uncompensated Baro-VNAV systems, LNAV/VNAV NA below -7°C or above 54°C. Inop table does not apply to LPV all Cats. For inop ALS, increase LNAV/VNAV all Cats visibility to 3/8 SM and LNAV all Cats visibility to 1 SM.		

ASOS 135.775	CHARLOTTE APP CON 120.05 307.8	CLNC DEL 132.55	UNICOM 122.7 (CTAF) 0
------------------------	--	---------------------------	---------------------------------



ELEV 683	TDZE 683
----------	----------



	1140	2500	MOSEE
FATED	JAMUN	WUVUL 1.6 NM to RW05	
2500	2500	1220	
GP 3.00° TCH 46		0.9 NM to RW05	
	8 NM	4 NM	0.7 NM 0.9 NM
CATEGORY	A	B	C D
LPV DA	933-3/4 250 (300-3/4)		
LNAV/VNAV DA	1001-3/4 318 (400-3/4)		
LNAV MDA	1020-3/4 337 (400-3/4)		
CIRCLING	1220-1 537 (600-1)	1220-1 1/2 537 (600-1 1/2)	1480-2 1/2 797 (800-2 1/2)

SE-2, 13 JUN 2024 to 11 JUL 2024

SE-2, 13 JUN 2024 to 11 JUL 2024