

WAAS CH 58012 W27A	APP CRS 270°	Rwy ldg 5445
		TDZE 588
		Apt Elev 590

RNAV (GPS) RWY 27

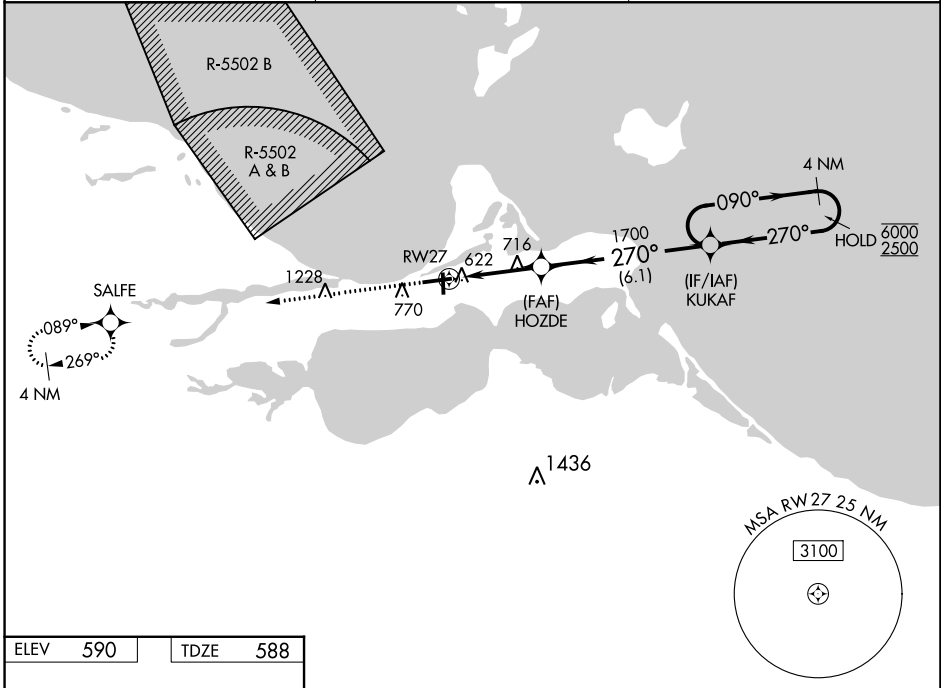
ERIE-OTTAWA INTL (PCW)

RNP APCH - GPS.

- ▼ Circling Rwy 18, 36 NA at night. Rwy 27 helicopter visibility reduction below 1 SM NA.
- ▲ For uncompensated Baro-VNAV systems, LNAV/VNAV NA below -16°C or above 54°C.

MISSED APPROACH:
Climb to 3000 direct
SALFE and hold.

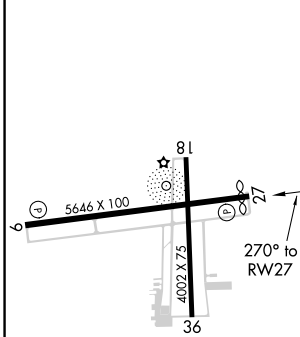
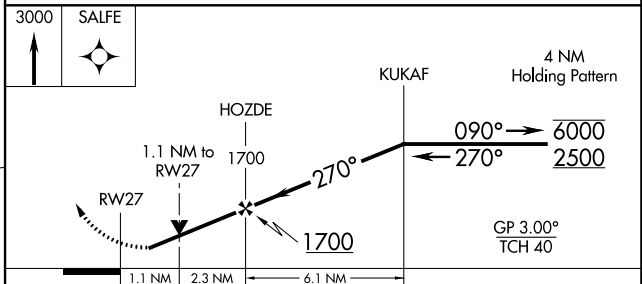
AWOS-3 118.775	CLEVELAND APP CON 126.35 346.325	UNICOM 122.8 (CTAF) 0
--------------------------	--	---------------------------------



EC-2, 13 JUN 2024 to 11 JUL 2024

EC-2, 13 JUN 2024 to 11 JUL 2024

ELEV 590	TDZE 588
----------	----------



CATEGORY	A	B	C	D
LPV DA		842-1	254 (300-1)	
LNAV/VNAV DA		969-1½		381 (400-1½)
LNAV MDA	980-1	392 (400-1)		980-1½ 392 (400-1½)
<input checked="" type="checkbox"/> CIRCLING	1140-1	550 (600-1)		1180-1½ 1580-3 590 (600-1½) 990 (1000-3)

- HIRL Rwy 9-27 0
- MIRL Rwy 18-36 0
- REL Rwy 9 and 27 0