

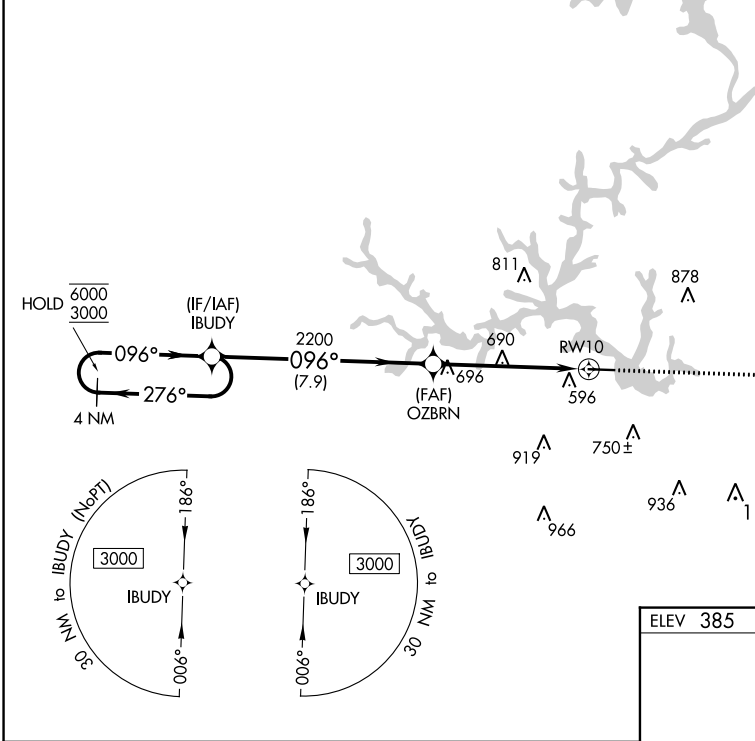
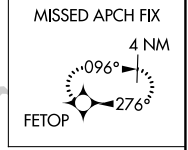
APP CRS	Rwy Idg	<b>5506</b>
<b>096°</b>	TDZE	<b>385</b>
	Apt Elev	<b>385</b>

# RNAV (GPS) RWY 10

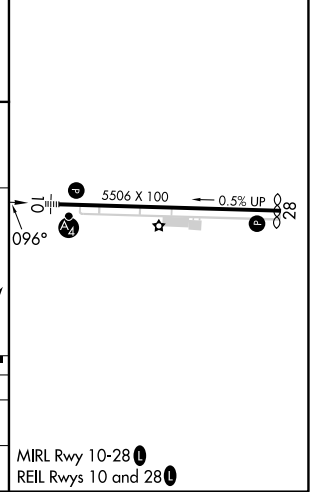
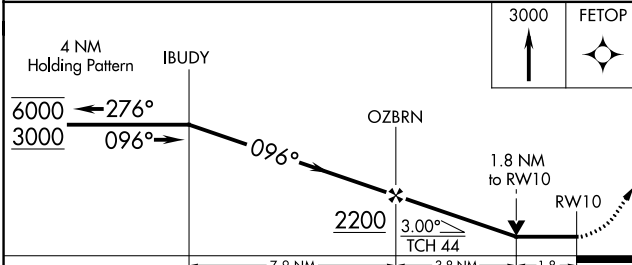
BALDWIN COUNTY RGNL (MLJ)

RNP APCH - GPS.	MALSF	MISSED APPROACH: Climb to 3000 direct FETOP and hold.
  Rwy 10 helicopter visibility reduction below 3/4 SM NA.		

AWOS-3 <b>120.925</b>	ATLANTA APP CON ★ <b>124.2 279.6</b>	UNICOM <b>122.975 (CTAF) 0</b>
--------------------------	---	-----------------------------------



ELEV 385	TDZE 385
----------	----------



CATEGORY	A	B	C	D
LNVA MDA	1000-1	615 (700-1)	1000-1½	615 (700-1½)
CIRCLING	1000-1	615 (700-1)	1080-2 695 (700-2)	1280-3 895 (900-3)

SE-4, 13 JUN 2024 to 11 JUL 2024

SE-4, 13 JUN 2024 to 11 JUL 2024