

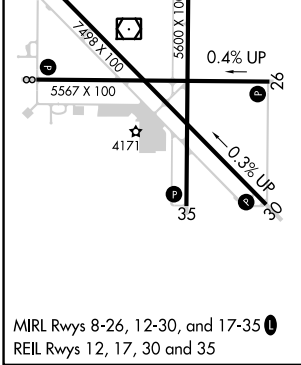
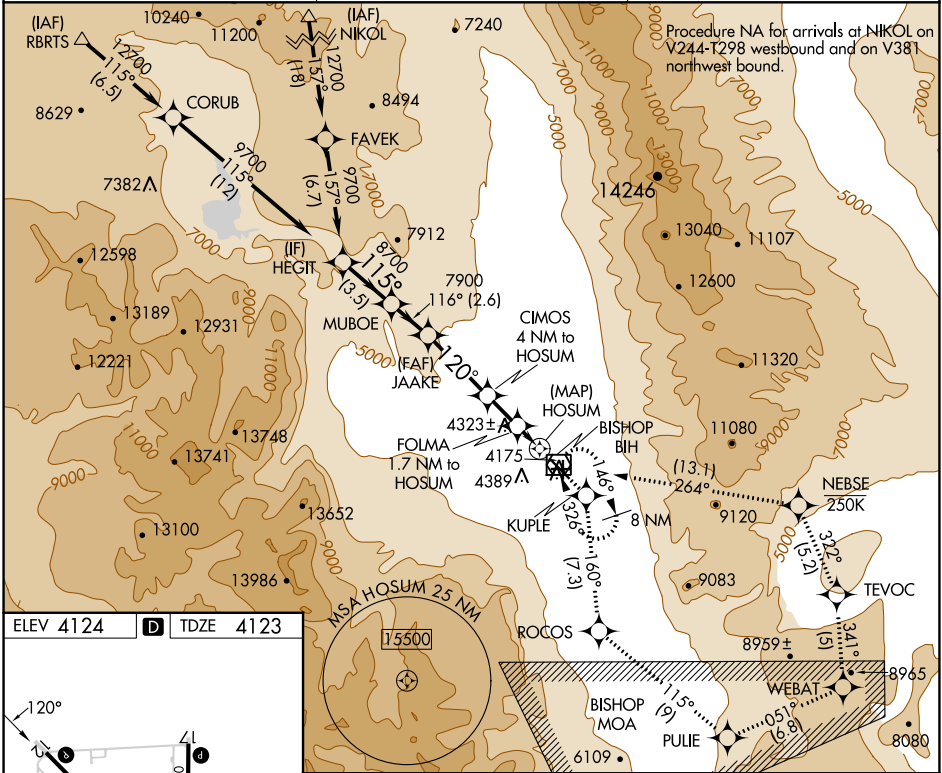
APP CRS	Rwy Idg	7098
120°	TDZE	4123
	Apt Elev	4124

RNAV (GPS) Z RWY 12

BISHOP (BIH)

RNP APCH-GPS.	MISSED APPROACH: (Do not exceed 250 KIAS until NEBSE) Climb to 13000 direct KUPLE and on track 160° to ROCOS and on track 115° to PULIE and on track 051° to WEBAT and on track 341° to TEVOC and on track 322° to NEBSE and on track 264° to BIH VOR/DME and hold.
<p>V Rwy 12, helicopter visibility reduction below 3/4 SM NA.</p> <p>A Missed approach requires minimum climb of 325 feet per NM to 11000; if unable, see RNAV (GPS) Y RWY 12.</p>	

ASOS 119.025	OAKLAND CENTER 125.75 284.65	UNICOM 123.0 (CTAF)
------------------------	--	-------------------------------



Visual Segment - Obstacles.				13000	KUPLE	tr 160°	ROCOS
HEGIT	MUBOE	JAAKE					
9700	8700	7900	6200	5200			
← 3.5 NM ← 2.6 NM ← 4.5 NM ← 2.3 NM ← 1.7 NM 1 NM →							
CATEGORY	A	B	C	D			
LNAV MDA	4580-1¼ 457 (500-1¼)			NA			
C CIRCLING	6420-1¼ 2296 (2300-1¼)	6420-1½ 2296 (2300-1½)	6420-3 2296 (2300-3)	NA			

SW-2, 13 JUN 2024 to 11 JUL 2024

SW-2, 13 JUN 2024 to 11 JUL 2024