

WAAS CH <b>56513</b> <b>W04A</b>	APP CRS <b>042°</b>	Rwy Idg TDZE Apt Elev	<b>7099</b> <b>158</b> <b>158</b>
--	------------------------	-----------------------------	---

# RNAV (GPS) RWY 4

ROCKY MOUNT/WILSON RGNL (R.WI)

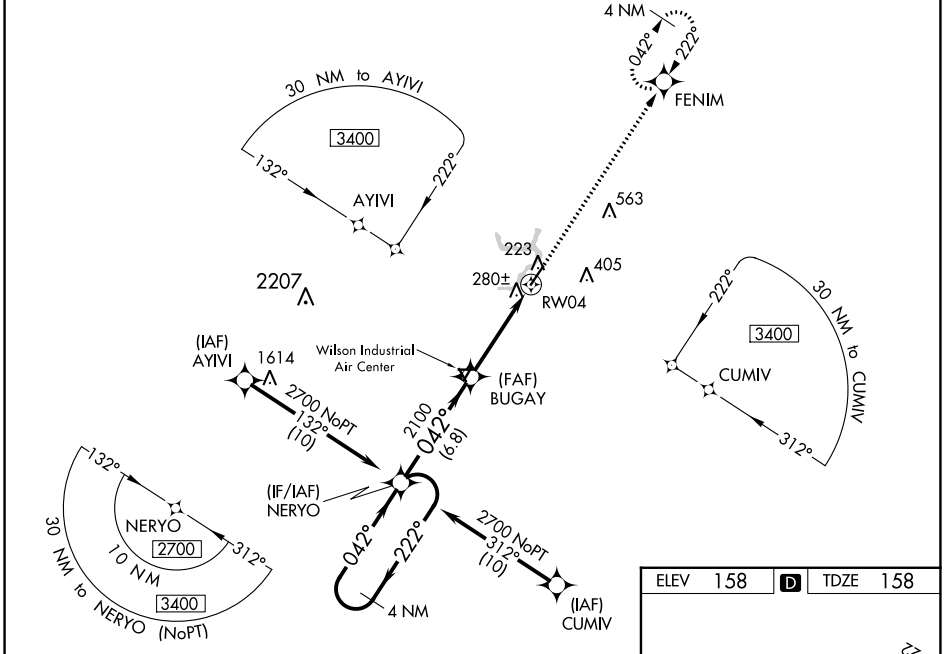
**⚠** Inop table does not apply to LPV when using local altimeter setting. For uncompensated Baro-VNAV systems, LNAV/VNAV NA below -10°C (14°F) or above 54°C (130°F).  
**⚠** When local altimeter setting not received, use Wayne Exec Jetport altimeter setting and increase LPV DA to 467; increase LNAV/VNAV DA to 601 and all Cats visibility ¼ mile; increase all MDA 60 feet and LNAV Cats C/D and Circling Cat C visibility ¼ mile.  
 For inop MALSR, increase LNAV Cat A/B visibility to 1 mile. DME/DME RNP-0.3 NA.  
 Baro-VNAV and VDP NA when using Wayne Exec Jetport altimeter setting.  
 Rwy 4 helicopter visibility reduction below ¼ SM NA.

MALSR



**MISSED APPROACH:**  
Climb to 2500 direct FENIM and hold.

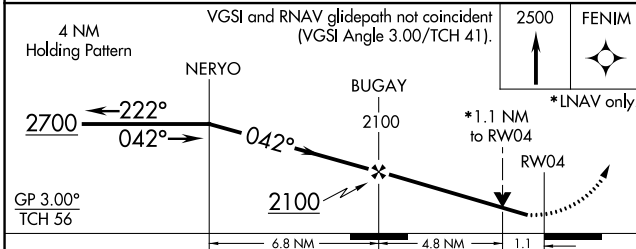
ASOS <b>118.875</b>	WASHINGTON CENTER <b>123.85 279.65</b>	UNICOM <b>123.05 (CTAF) ①</b>
------------------------	---	----------------------------------



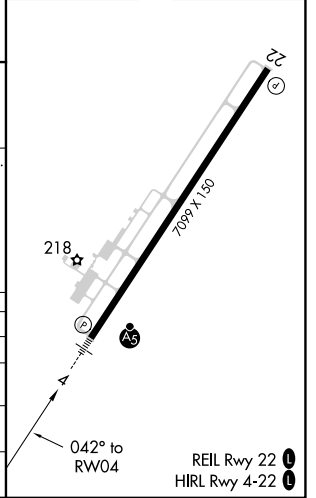
SE-2, 13 JUN 2024 to 11 JUL 2024

SE-2, 13 JUN 2024 to 11 JUL 2024

ELEV 158	<b>D</b>	TDZE 158
----------	----------	----------



CATEGORY	A	B	C	D
LPV DA		408-¾	250 (300-¾)	
LNAV/VNAV DA		542-¾	384 (400-¾)	
LNAV MDA		560-¾	402 (500-¾)	
<b>C</b> CIRCLING	600-1 442 (500-1)	620-1 462 (500-1)	720-1½ 562 (600-1½)	760-2 602 (700-2)



# RNAV (GPS) RWY 4