

| | | | |
|--|------------------------|---|---|
| WAAS CH 81909 W35A | APP CRS 352° | Rwy Idg TDZE 3176 Apt Elev 3188 | 5110 3176 3188 |
|--|------------------------|---|---|

RNAV (GPS) RWY 35

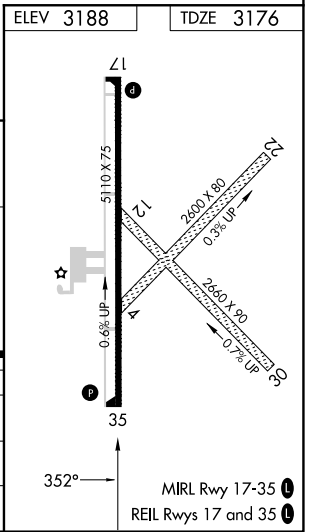
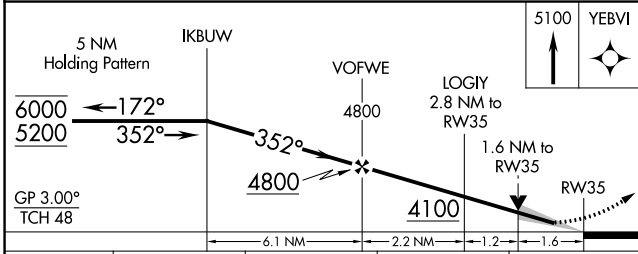
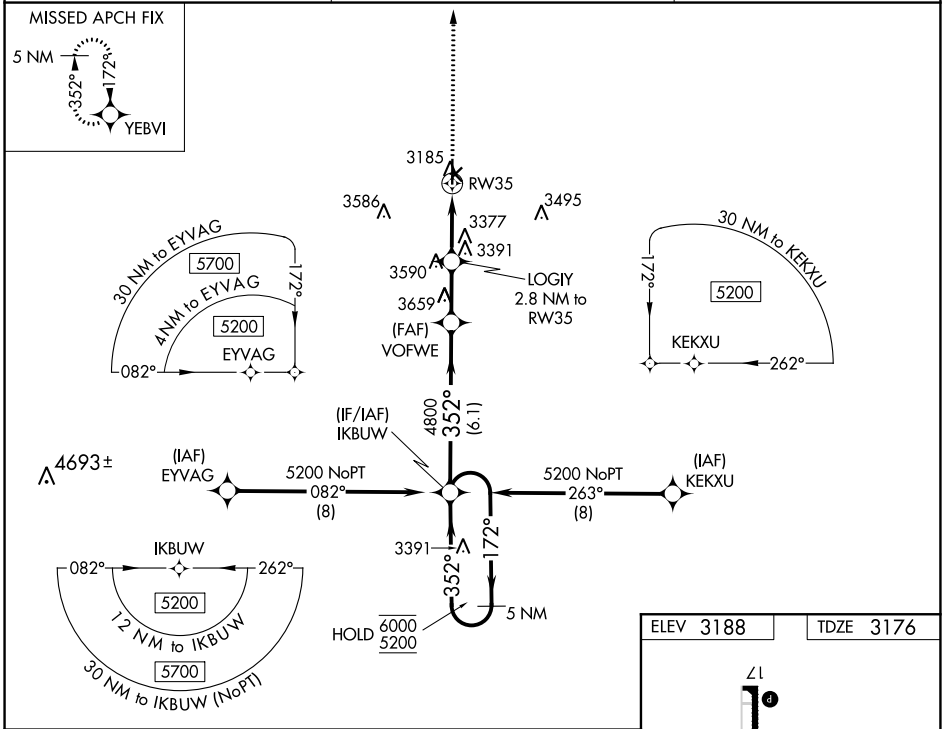
SHALZ FLD (CBK)

RNP APCH-GPS.

Baro-VNAV and VDP NA when using Goodland altimeter setting. For uncompensated Baro-VNAV systems, LNAV/VNAV NA below -21°C or above 54°C. When local altimeter setting not received, use Goodland altimeter setting: increase LPV DA to 3511 feet and visibility ¼ SM, LNAV/VNAV DA to 3561 feet and visibility ⅓ SM; increase all MDAs 140 feet and visibility Cat C ⅓ SM.

MISSED APPROACH:
Climb to 5100 direct YEBVI and hold.

| | | |
|---------------------------|---------------------------------------|-------------------------------|
| AWOS-3P 118.175 | DENVER CENTER 132.7 226.675 | UNICOM 122.8 (CTAF) |
|---------------------------|---------------------------------------|-------------------------------|



| CATEGORY | A | B | C | D |
|--------------|--------|-------------|-------------------------|----|
| LPV DA | 3376-¾ | | 200 (200-¾) | NA |
| LNAV/VNAV DA | 3426-¾ | | 250 (300-¾) | NA |
| LNAV MDA | 3700-1 | 524 (600-1) | 3700-1½ 524 (600-1½) | NA |

NC-2, 13 JUN 2024 to 11 JUL 2024

NC-2, 13 JUN 2024 to 11 JUL 2024