

WAAS CH 49135 W04A	APP CRS 040°	Rwy Idg 5002 TDZE 181 Apt Elev 182
--	------------------------	---

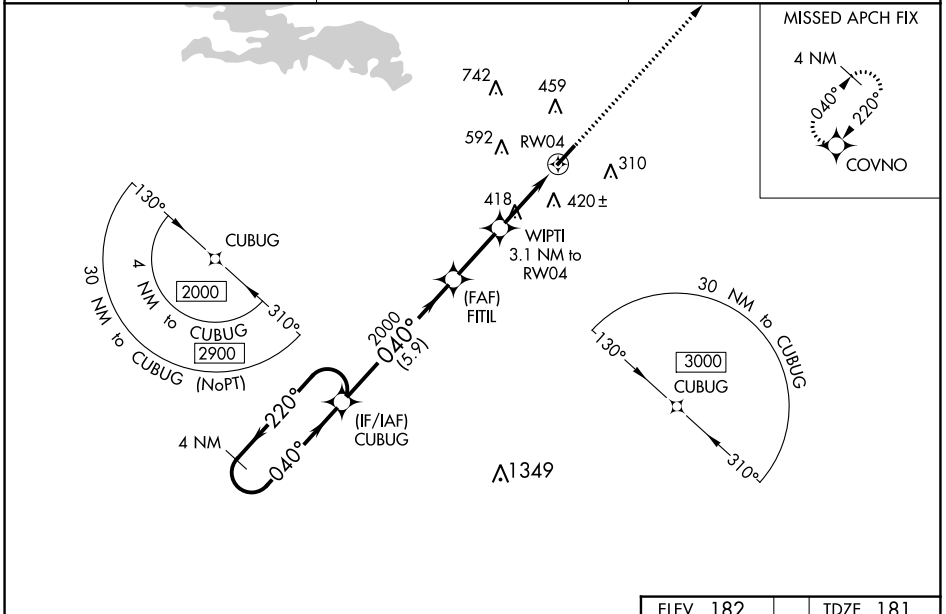
RNAV (GPS) RWY 4

DEXTER B FLORENCE MEML FLD (ADF)

⚠ DME/DME RNP-0.3 NA. When local altimeter setting not received use Hot Springs altimeter setting and increase all DA 103 feet and MDA 120 feet and increase LPV all Cats visibility $\frac{1}{8}$ mile and LNAV/VNAV all Cats visibility and Circling Cat C visibility $\frac{1}{2}$ mile. For uncompensated Baro-VNAV systems, LNAV/VNAV NA below -15°C (5°F) or above 54°C (130°F). Baro-VNAV NA when using Hot Springs altimeter setting. Helicopter visibility reduction below $\frac{3}{4}$ SM NA. Night landing: Rwy 22 NA.

⚠ NA MISSED APPROACH: Climb to 2100 direct COVNO and hold.

AWOS-3PT 118.175	MEMPHIS CENTER 128.475 377.15	UNICOM 122.7 (CTAF) 0
----------------------------	---	--



SC-1, 13 JUN 2024 to 11 JUL 2024

SC-1, 13 JUN 2024 to 11 JUL 2024

ELEV 182		TDZE 181	
VGSi and RNAV glidepath not coincident (VGSi Angle 3.00/TCH 23).			
4 NM Holding Pattern CUBUG		FITIL 2000	
GP 3.00° TCH 45		WIPTI 3.1 NM to RW04	
2000 ← 220° → 040° → 2000		RW04	
5.9 NM		2.5 NM	
3.1 NM		2100 COVNO	
*LNAV only.			
CATEGORY	A	B	D
LPV DA	431-1	250 (300-1)	NA
LNAV/VNAV DA	669-1 $\frac{5}{8}$	488 (500-1 $\frac{3}{8}$)	NA
LNAV MDA	680-1	499 (500-1)	680-1 $\frac{3}{8}$ 499 (500-1 $\frac{3}{8}$)
C CIRCLING	760-1 578 (600-1)	800-1 618 (700-1)	1040-2 $\frac{1}{2}$ 858 (900-2 $\frac{1}{2}$)

