

KARR SEVEN DEPARTURE (RNAV)

**TOP ALTITUDE:
ASSIGNED BY ATC**

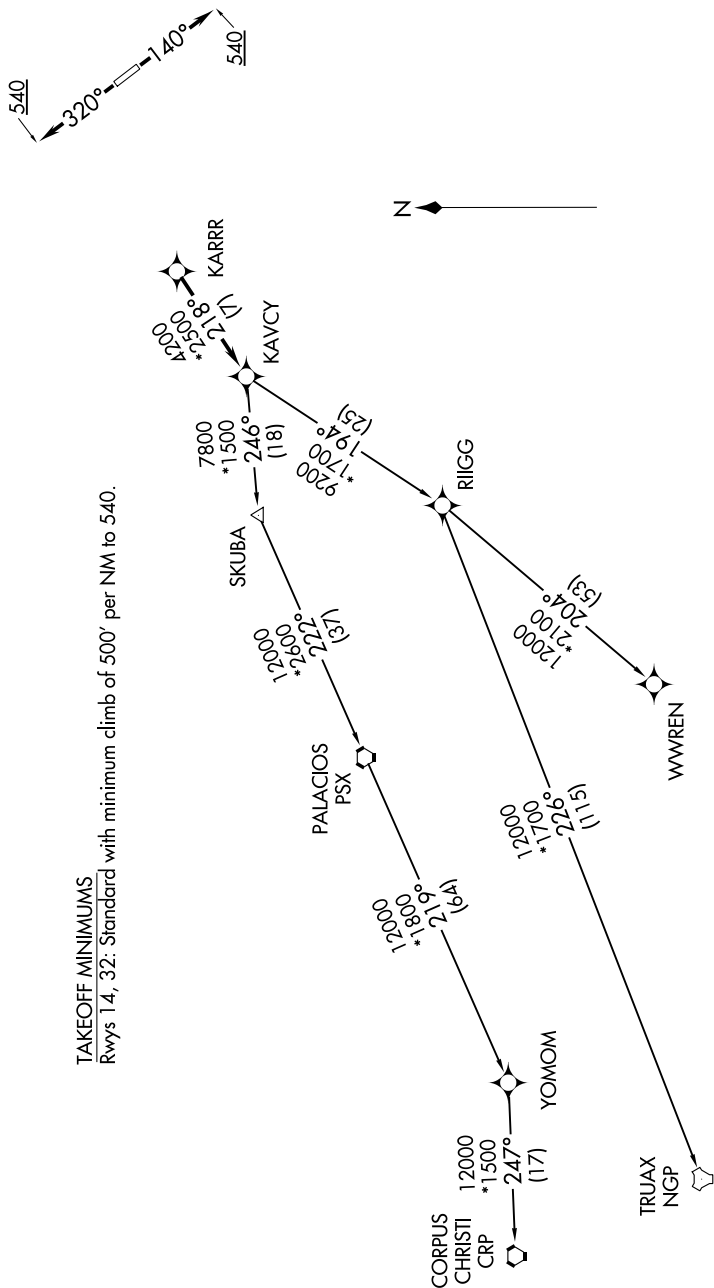
RNAV-1 DME/DME/IRU or GPS.
RADAR required.

CTAF
122.8
HOUSTON DEP CON
134.45 284.0

SC-5, 13 JUN 2024 to 11 JUL 2024

TAKEOFF MINIMUMS

Rwys 14, 32: Standard with minimum climb of 500' per NM to 540.



NOTE: Chart not to scale.

(NARRATIVE ON FOLLOWING PAGE)

SC-5, 13 JUN 2024 to 11 JUL 2024

KARR SEVEN DEPARTURE (RNAV)