

APP CRS	Rwy Idg	4100
330°	TDZE	1215
	Apt Elev	1231

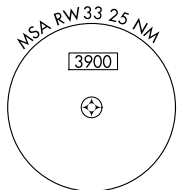
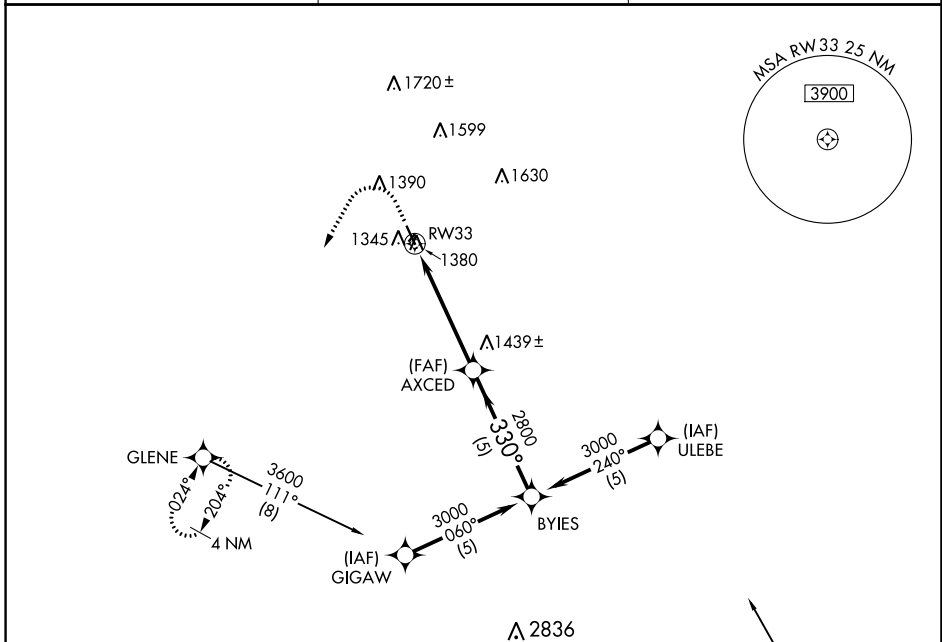
GPS RWY 33

HARLAN MUNI (HNR)

NA Procedure NA at night. Helicopter visibility reduction below 1 SM NA. Circling NA to Rwy 3 and 21.

MISSED APPROACH: Climb to 2000, then climbing left turn to 3600 direct GLENE and hold.

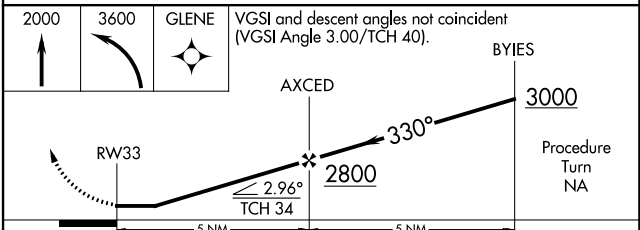
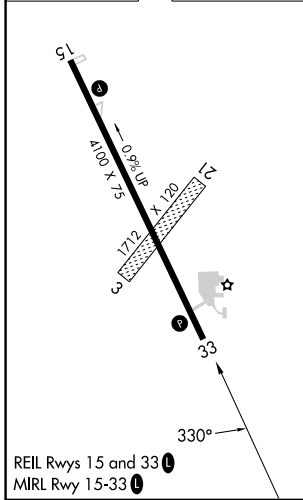
AWOS-3 118.325	OMAHA APP CON 124.5 263.0	UNICOM 122.8 (CTAF)
--------------------------	-------------------------------------	-------------------------------



NC-3, 13 JUN 2024 to 11 JUL 2024

NC-3, 13 JUN 2024 to 11 JUL 2024

ELEV 1231	TDZE 1215
-----------	-----------



CATEGORY	A	B	C	D
S-33	1640-1	425 (500-1)		NA
CIRCLING	1780-1	549 (600-1)		NA