

APP CRS	Rwy Idg	<b>4100</b>
<b>150°</b>	TDZE	<b>1231</b>
	Apt Elev	<b>1231</b>

# RNAV (GPS) RWY 15

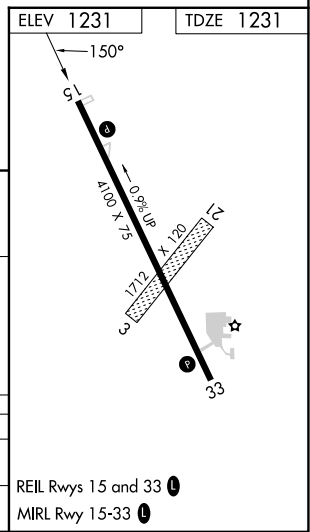
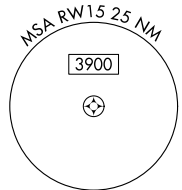
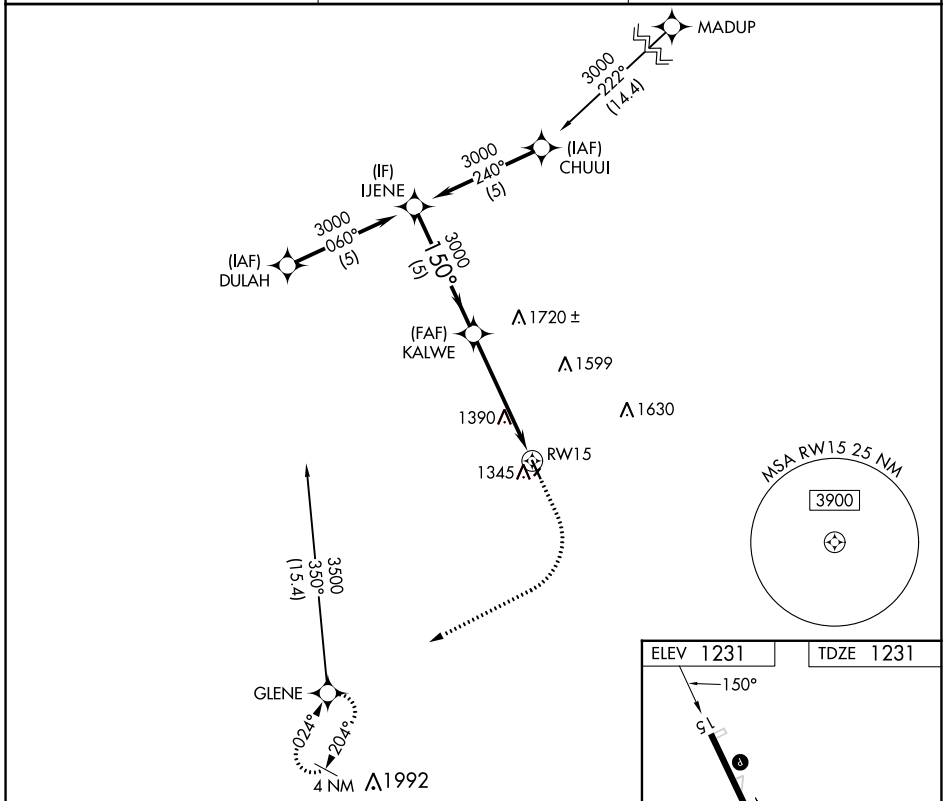
HARLAN MUNI (HNR)

RNP APCH - GPS.

Circling NA to Rwys 3 and 21. Procedure NA at night.  
 Rwy 15 helicopter visibility reduction below 1 SM NA.

MISSED APPROACH: Climb to 2000, then climbing right turn to 3600 direct GLENE and hold.

AWOS-3 <b>118.325</b>	OMAHA APP CON <b>124.5 263.0</b>	UNICOM <b>122.8 (CTAF) </b>
--------------------------	-------------------------------------	--------------------------------



VGSI and descent angles not coincident (VGSI Angle 3.00/TCH 40).

	2000	3600	GLENE

IJENE	KALWE	RW15
3000	3000	3.27° TCH 35
5 NM		5 NM

CATEGORY	A	B	C	D
LNAV MDA	1860-1	629 (700-1)	NA	
CIRCLING	1860-1	629 (700-1)	NA	

NC-3, 13 JUN 2024 to 11 JUL 2024

NC-3, 13 JUN 2024 to 11 JUL 2024