

WAAS CH 65901 W04A	APP CRS 037°	Rwy Idg TDZE 863 Apt Elev 869	6497
--	------------------------	---	-------------

RNAV (GPS) RWY 4

LEE C FINE MEML (AIZ)

RNP APCH.

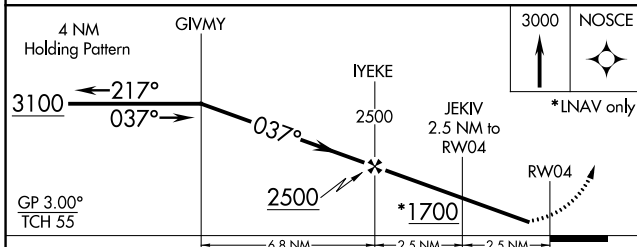
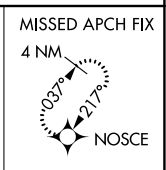
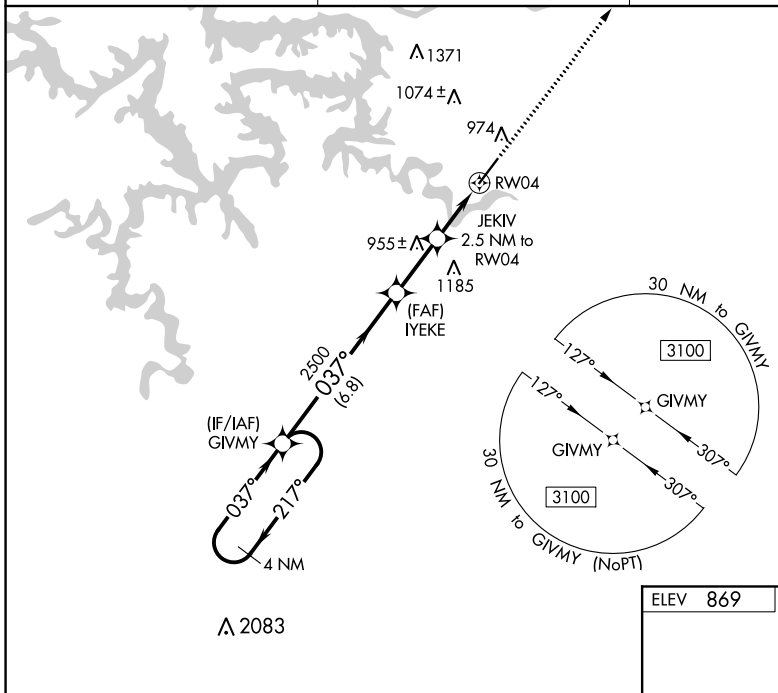
⚠ For uncompensated Baro-VNAV systems, LNAV/VNAV NA below -16°C or above 54°C. Procedure NA at night. Rwy 4 helicopter visibility reduction below 1 SM NA. When local altimeter setting not received, use Camdenton altimeter setting and increase all DA 50 feet, all MDA 60 feet, and LNAV Cat C visibility 1/8 mile. Baro-VNAV NA when using Camdenton altimeter setting.

MISSED APPROACH: Climb to 3000 direct NOSCE and hold.

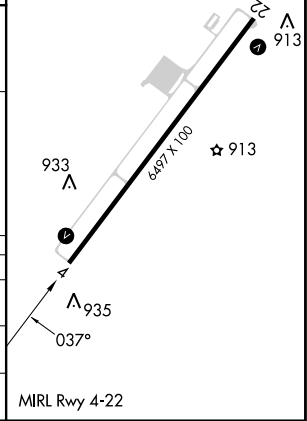
AWOS-3PT
135.325

MIZZU APP CON
124.1 353.925

UNICOM
122.8 (CTAF)



ELEV 869	TDZE 863
----------	----------



CATEGORY	A	B	C	D
LPV DA	1127-1	264 (300-1)		NA
LNAV/VNAV DA	1113-1	250 (300-1)		NA
LNAV MDA	1220-1	357 (400-1)		NA

NC-3, 13 JUN 2024 to 11 JUL 2024

NC-3, 13 JUN 2024 to 11 JUL 2024