

APP CRS 278°	Rwy Idg TDZE Apt Elev	5003 806 806
------------------------	-----------------------------	---

RNAV (GPS) RWY 28

HUNTINGTON MUNI (HHG)

RNP APCH - GPS.

MISSED APPROACH: Climb to 1700 then climbing right turn to 2600 direct IDXOH and hold.

⚠ Rwy 28 helicopter visibility reduction below 3/4 SM NA.

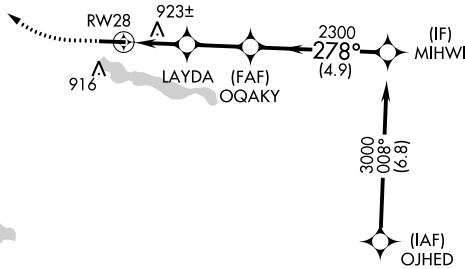
AWOS-3PT
126.575

FORT WAYNE APP CON
127.2 284.6

UNICOM
122.8 (CTAF) 0

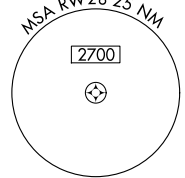


△ 1182

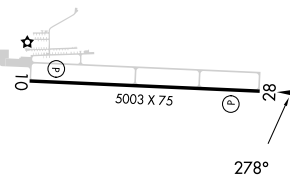


△ 1397

Procedure NA for arrivals at AJAYS on V221 southbound.



ELEV 806	TDZE 806
----------	----------



1700	2600	IDXOH	VGSi and descent angles not coincident (VGSi Angle 3.00/TCH 49).		MIHWI
↑	↷	✧	LAYDA	↘ 3.00° TCH 45	3000
			1.1 NM to RWY 28	↘ 278°	
			1560	2300	
			1.1 NM	1.2 NM	2.3 NM
				4.9 NM	
CATEGORY	A	B	C	D	
LNAV MDA	1200-1	394 (400-1)	1200-1½	394 (400-1½)	
C CIRCLING	1300-1	494 (500-1)	1460-1¾ 654 (700-1¾)	1540-2¼ 734 (800-2¼)	

MIRL Rwy 10-28 **0**
REIL Rwys 10 and 28 **0**

EC-2, 13 JUN 2024 to 11 JUL 2024

EC-2, 13 JUN 2024 to 11 JUL 2024