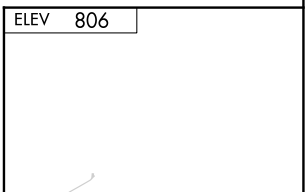
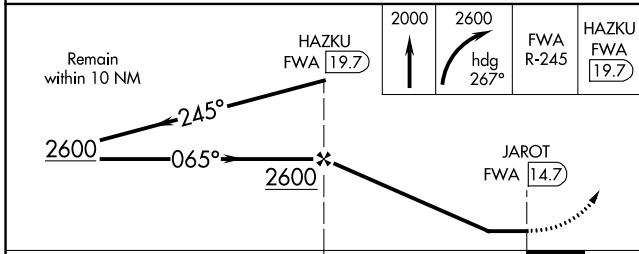
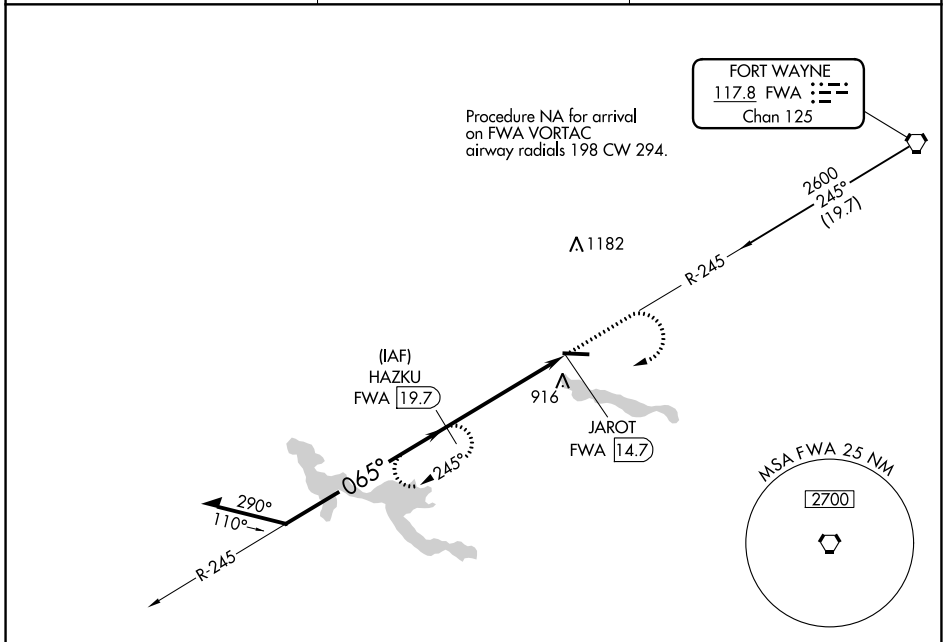


VORTAC FWA <b>117.8</b> Chan <b>125</b>	APP CRS <b>065°</b>	Rwy Idg TDZE Apt Elev	<b>N/A</b> <b>N/A</b> <b>806</b>
---	------------------------	-----------------------------	--

**VOR-A**  
HUNTINGTON MUNI (HHG)

DME required.	MISSED APPROACH: Climb to 2000 then climbing right turn to 2600 on heading 267° and on FWA VORTAC R-245 to HAZKU/19.7 DME and hold.
---------------	---

AWOS-3PT <b>126.575</b>	FORT WAYNE APP CON <b>127.2 284.6</b>	UNICOM <b>122.8 (CTAF) 0</b>
----------------------------	--	---------------------------------



CATEGORY	A	B	C	D
<b>CIRCLING</b>	1300-1	494 (500-1)	1460-1¾ 654 (700-1¾)	1540-2¼ 734 (800-2¼)

ELEV **806**

MIRL Rwy 10-28 **0**  
REIL Rwy 10 and 28 **0**

EC-2, 13 JUN 2024 to 11 JUL 2024

EC-2, 13 JUN 2024 to 11 JUL 2024