

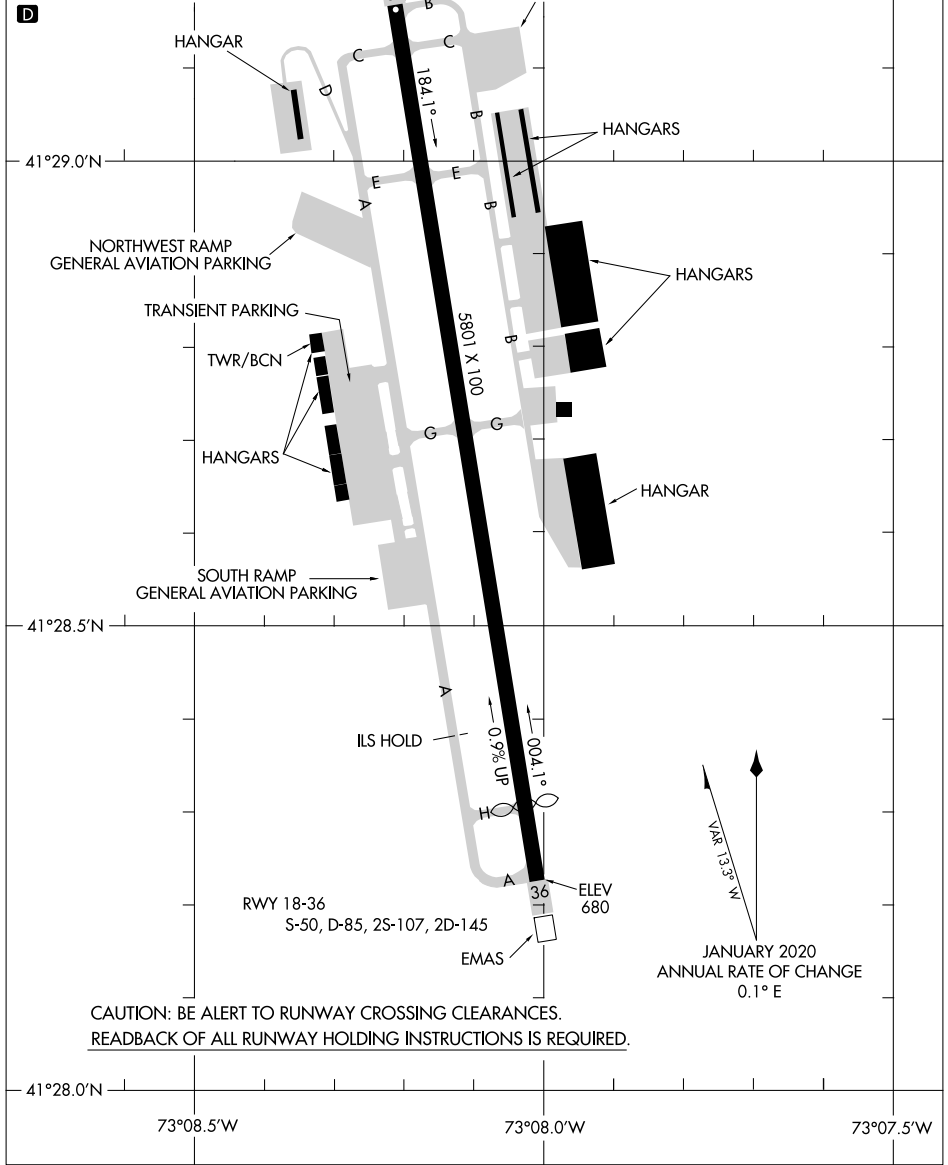
20086

AIRPORT DIAGRAM

AL-5785 (FAA)

WATERBURY-OXFORD (OXC)
OXFORD, CONNECTICUT

ATIS
 132.975
 OXFORD TOWER ★
 118.475
 GND CON
 121.65
 CLNC DEL
 121.65
 135.1 (When Tower Closed)



CAUTION: BE ALERT TO RUNWAY CROSSING CLEARANCES.
 READBACK OF ALL RUNWAY HOLDING INSTRUCTIONS IS REQUIRED.

NE-1, 13 JUN 2024 to 11 JUL 2024

NE-1, 13 JUN 2024 to 11 JUL 2024

AIRPORT DIAGRAM

20086

OXFORD, CONNECTICUT
WATERBURY-OXFORD (OXC)