

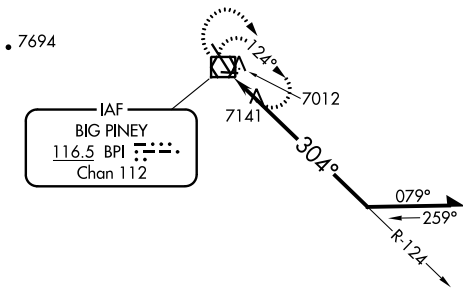
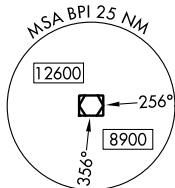
VOR/DME BPI <b>116.5</b> Chan <b>112</b>	APP CRS <b>304°</b>	Rwy Idg TDZE Apt Elev <b>6803</b> <b>6969</b> <b>6994</b>
--	------------------------	--

# VOR RWY 31

MILEY MEML FLD (BPI)

<b>NA</b>	Circling NA to Rwy 8 and 26.	MISSED APPROACH: Climbing right turn to 10000 in BPI VOR/DME holding pattern.
-----------	------------------------------	---

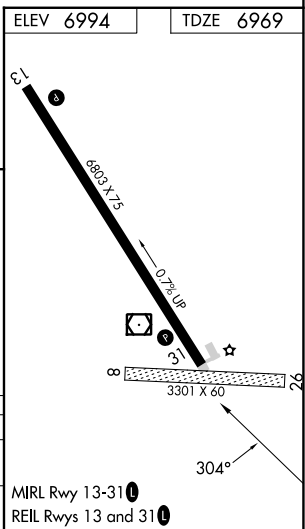
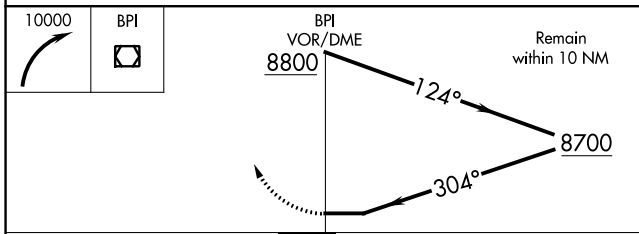
ASOS <b>135.225</b>	SALT LAKE CENTER <b>128.35 239.25</b>	UNICOM <b>122.8</b> (CTAF)	<b>122.70</b>
------------------------	--	-------------------------------	---------------



8600

10315

9005



CATEGORY	A	B	C	D
S-31	7680-1	711 (700-1)	7680-2	711 (700-2)
CIRCLING	7680-1	686 (700-1)	7800-2 <sup>3</sup> / <sub>4</sub> 806 (900-2 <sup>3</sup> / <sub>4</sub> )	7820-2 <sup>3</sup> / <sub>4</sub> 826 (900-2 <sup>3</sup> / <sub>4</sub> )

NW-1, 13 JUN 2024 to 11 JUL 2024

NW-1, 13 JUN 2024 to 11 JUL 2024