

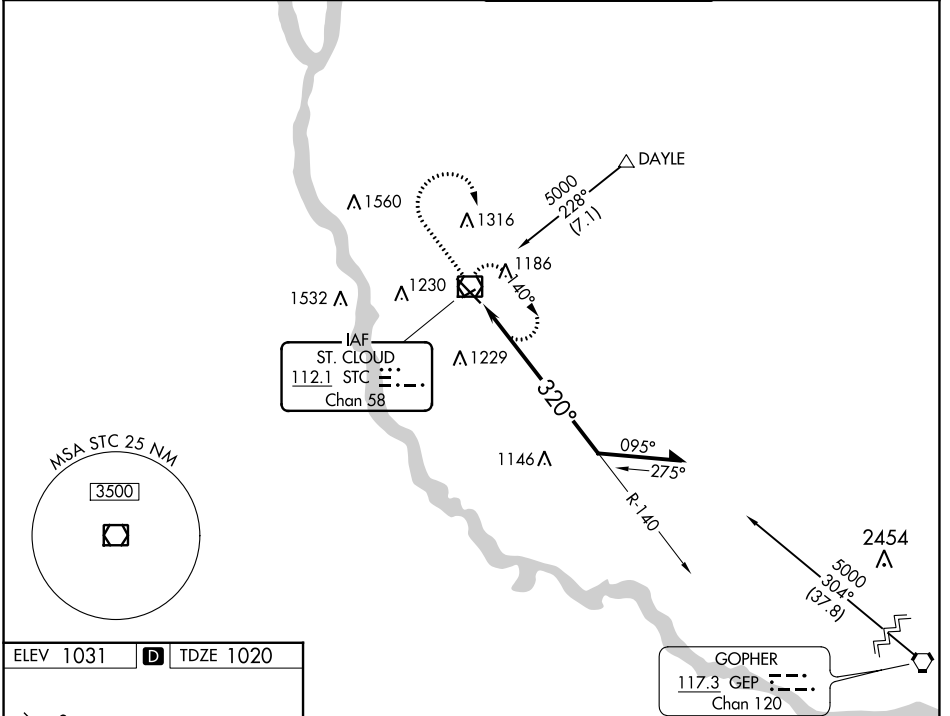
VOR/DME STC <b>112.1</b> Chan <b>58</b>	APP CRS <b>320°</b>	Rwy Idg TDZE <b>7000</b> <b>1020</b>	Apt Elev <b>1031</b>
---	------------------------	--	-------------------------

# VOR RWY 31

ST CLOUD RGNL (STC)

For inop ALS, increase S-31 Cat C and D visibility to 1 3/8 SM.	<b>MALSR</b> MISSED APPROACH: Climb to 2700 then right turn direct STC VOR/DME and hold.
---	---

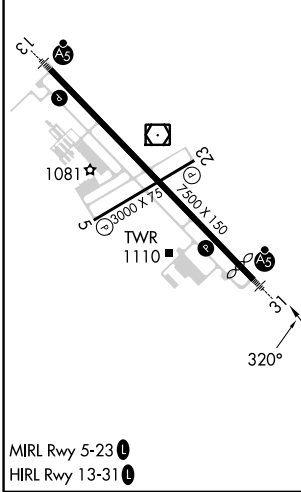
<b>ATIS</b> <b>119.375</b>	<b>MINNEAPOLIS CENTER</b> <b>121.05 235.775</b>	<b>ST. CLOUD TOWER *</b> <b>118.25 (CTAF)</b>	<b>GND CON</b> <b>123.75</b>
-------------------------------	--	--	---------------------------------



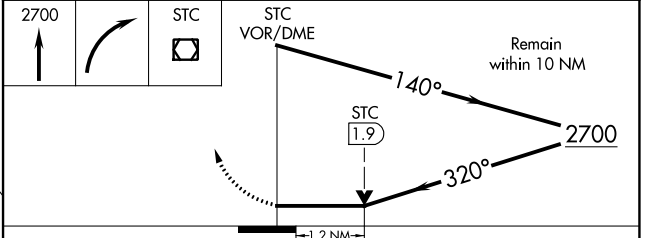
NC-1, 13 JUN 2024 to 11 JUL 2024

NC-1, 13 JUN 2024 to 11 JUL 2024

ELEV 1031	<b>D</b>	TDZE 1020
-----------	----------	-----------



Procedure NA for arrival on GEP VORTAC airway radials 260 CW 352.



CATEGORY	A	B	C	D
S-31	1460-1/2	440 (500-1/2)	1460-3/4 440 (500-3/4)	1460-1 440 (500-1)
CIRCLING	1500-1	469 (500-1)	1620-1 1/2 589 (600-1 1/2)	1860-2 3/4 829 (900-2 3/4)