

LOC/DME I-SBO 109.35 Chan 30 (Y)	APP CRS 136°	Rwy Idg 6021 TDZE 327 Apt Elev 327
---	------------------------	---

ILS or LOC RWY 14

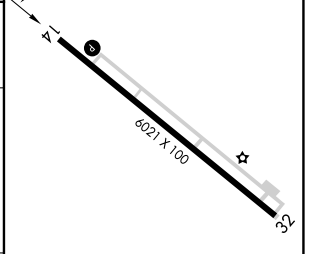
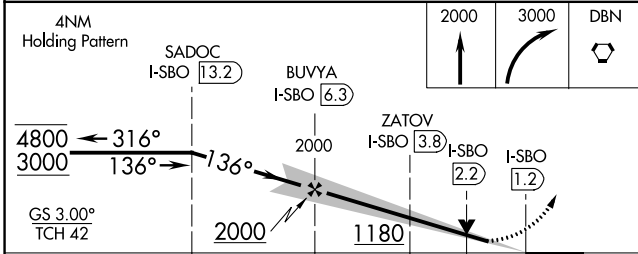
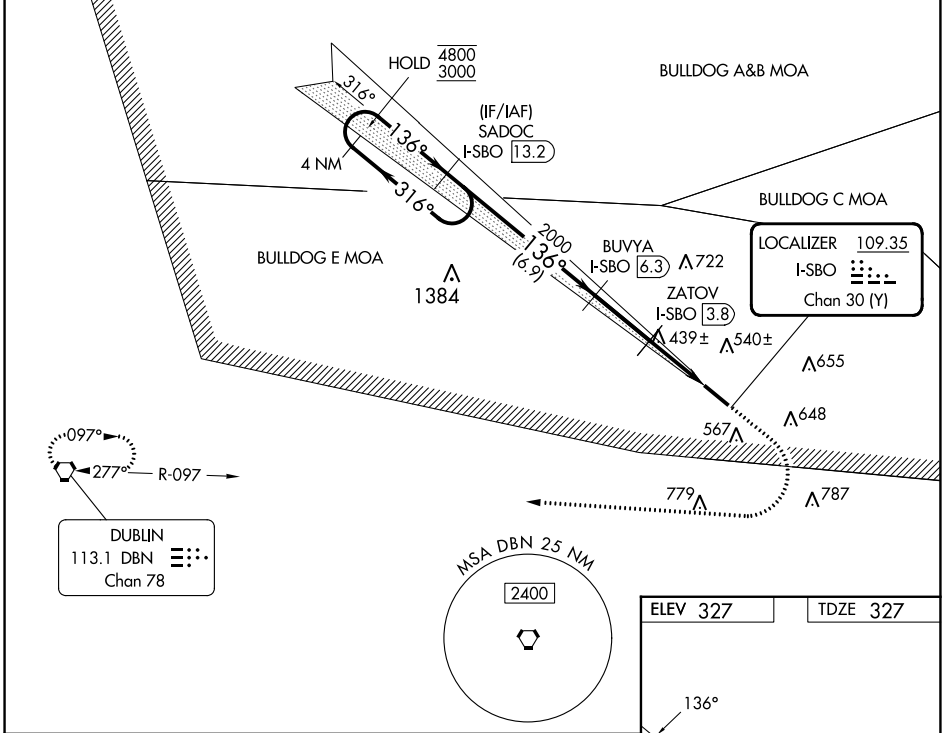
EAST GEORGIA RGNL (SBO)

DME required. RADAR required for procedure entry.

⚠ Rwy 14 helicopter visibility reduction below ¼ SM NA. VDP NA when using Vidalia altimeter setting. When local altimeter setting not received, use Vidalia altimeter setting: increase S-ILS 14 DA to 705 feet; increase all MDAs 80 feet and visibility S-LOC 14 Cats C and D ¾ SM, and Circling Cats C and D ¼ SM.

MISSED APPROACH: Climb to 2000 then climbing right turn to 3000 direct DBN VORTAC and hold.

AWOS-3 133.375	ATLANTA CENTER 127.95 343.75	UNICOM 122.975 (CTAF) 0
--------------------------	--	--



CATEGORY	A	B	C	D
S-ILS 14		640-1	313 (400-1)	
S-LOC 14		700-1	373 (400-1)	
C CIRCLING	900-1 573 (600-1)	920-1 593 (600-1)	1000-2 673 (700-2)	1000-2¼ 673 (700-2¼)

HIRL Rwy 14-32 **0**

SE-4, 13 JUN 2024 to 11 JUL 2024

SE-4, 13 JUN 2024 to 11 JUL 2024