

WAAS CH 99306 W32A	APP CRS 316°	Rwy Idg TDZE Apt Elev	6021 323 327
--	------------------------	-----------------------------	---

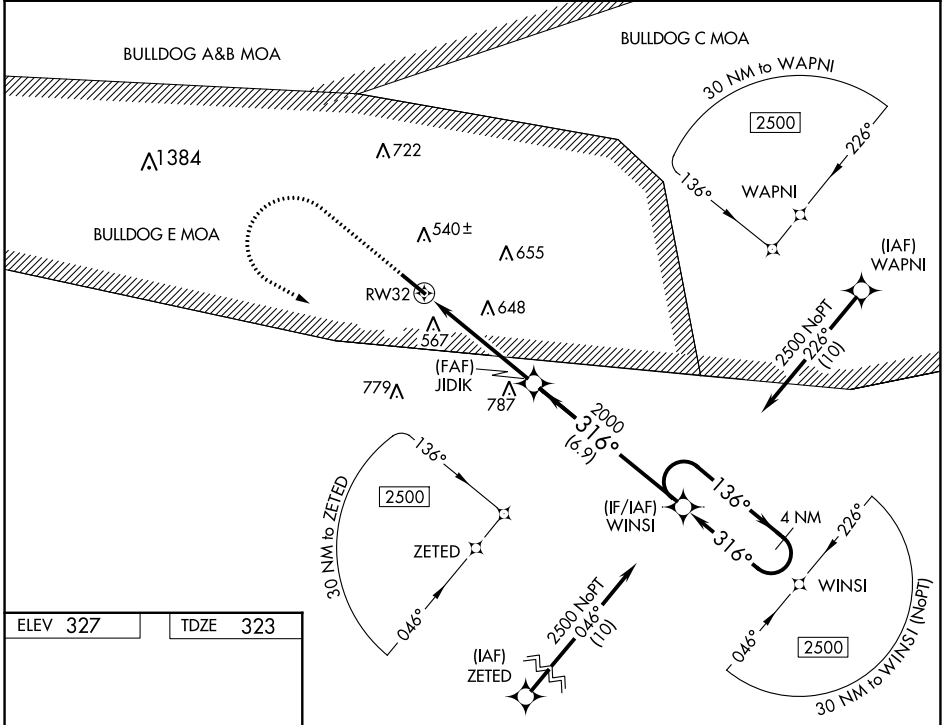
RNAV (GPS) RWY 32

EAST GEORGIA RGNL (SBO)

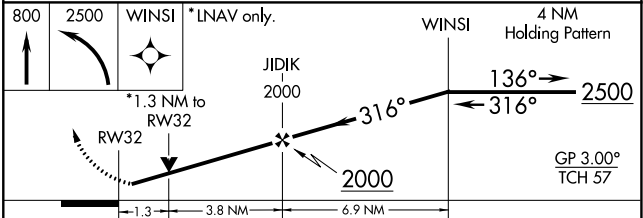
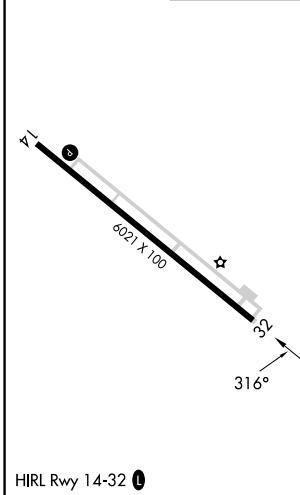
⚠ Baro-VNAV and VDP NA when using Vidalia altimeter setting. For uncompensated Baro-VNAV systems, LNAV/VNAV NA below +15°C (5°F) or above 54°C (130°F).
⚠ When local altimeter setting not received, use Vidalia altimeter setting and increase all DA to 638 feet and all MDA 80 feet; increase LNAV Cats C/D visibility 1/8 SM, and Circling Cats C/D visibility 1/4 SM. DME/DME RNP-0.3 NA. Rwy 32 helicopter visibility reduction below 3/4 SM NA.

MISSED APPROACH: Climb to 800 then climbing left turn to 2500 direct WINSI and hold.

AWOS-3 133.375	ATLANTA CENTER 127.95 343.75	UNICOM 122.975 (CTAF) 1
--------------------------	--	-----------------------------------



ELEV 327	TDZE 323
-----------------	-----------------



CATEGORY	A	B	C	D
LPV DA	573-1		250 (300-1)	
LNAV/DA VNAV	573-1		250 (300-1)	
LNAV MDA	780-1 457 (500-1)		780-1 1/8 457 (500-1 1/8)	
CIRCLING	900-1 573 (600-1)	920-1 593 (600-1)	1000-2 673 (700-2)	1000-2 1/4 673 (700-2 1/4)

SE-4, 13 JUN 2024 to 11 JUL 2024

SE-4, 13 JUN 2024 to 11 JUL 2024