

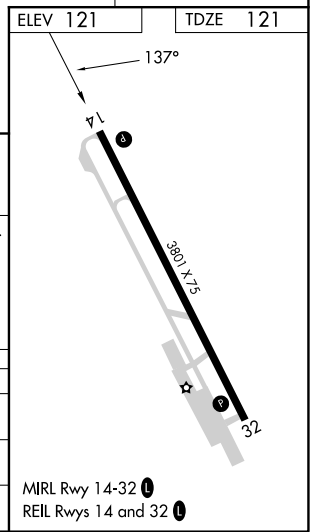
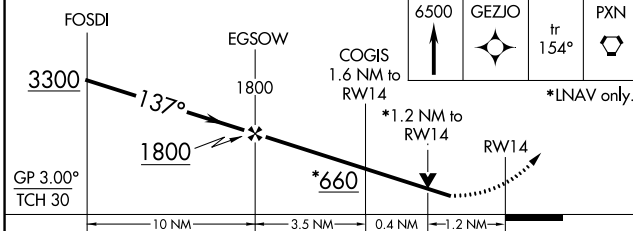
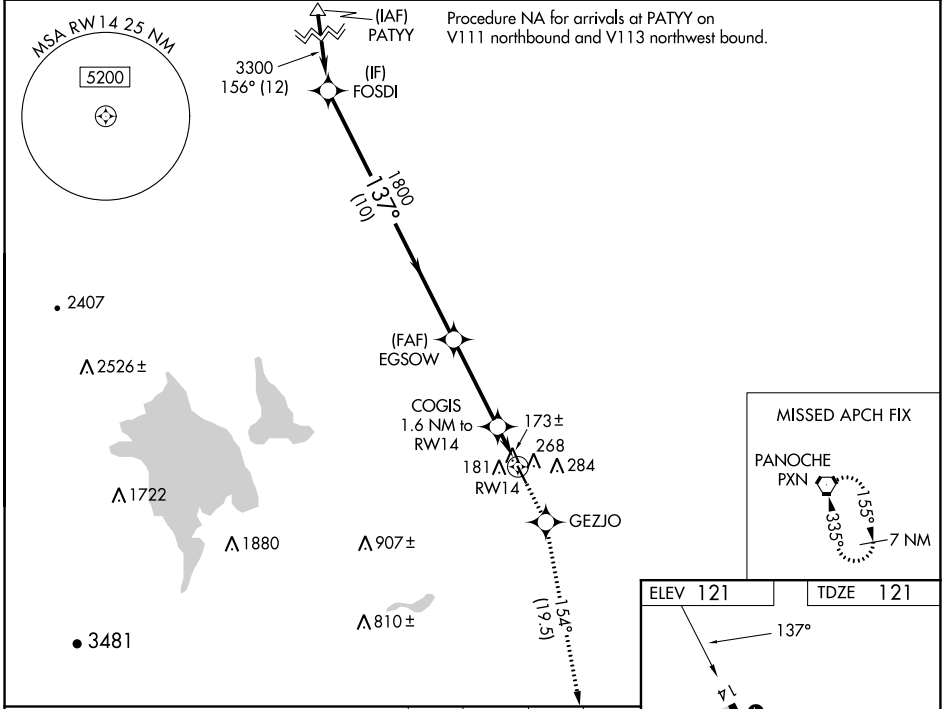
WAAS CH 53715 W14A	APP CRS 137°	Rwy Idg TDZE 121 Apt Elev 121	3801
--	------------------------	---	-------------

RNAV (GPS) RWY 14

LOS BANOS MUNI (LSN)

RNP APCH.		MISSED APPROACH: Climb to 6500 direct GEZJO and on track 154° to PXN VORTAC and hold, continue climb-in-hold to 6500.
▽ ▲ NA	Rwy 14 helicopter visibility reduction below ¼ SM NA. Baro-VNAV and VDP NA when using Merced Yosemite Rgnl altimeter setting. For uncompensated Baro-VNAV systems, LNAV/VNAV NA below -15°C or above 54°C. When local altimeter setting not received, use Merced Yosemite Rgnl altimeter setting and increase all DA/MDA 60 feet, and all visibility ¼ SM.	

AWOS-3 118,675	NORCAL APP CON 120.95 269,45	UNICOM 122.8 (CTAF) 📻
--------------------------	--	--



CATEGORY	A	B	C	D
LPV DA	455-1¼ 334 (400-1¼)			
LNAV/VNAV DA	519-1½ 398 (400-1½)			
LNAV MDA	520-1 399 (400-1)		520-1½ 399 (400-1½)	520-1¼ 399 (400-1¼)

SW-2, 13 JUN 2024 to 11 JUL 2024

SW-2, 13 JUN 2024 to 11 JUL 2024