

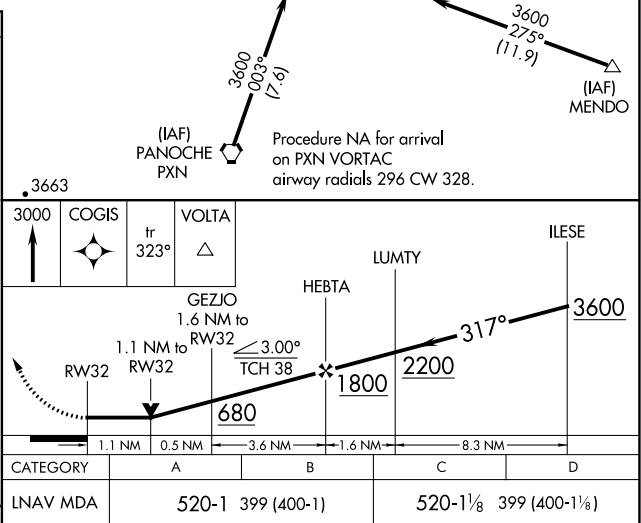
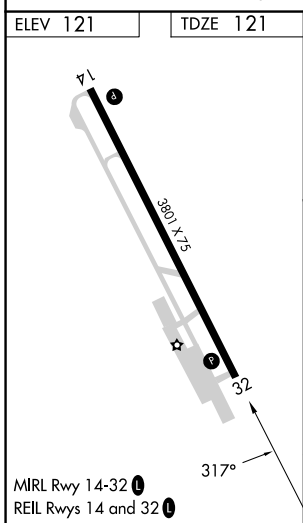
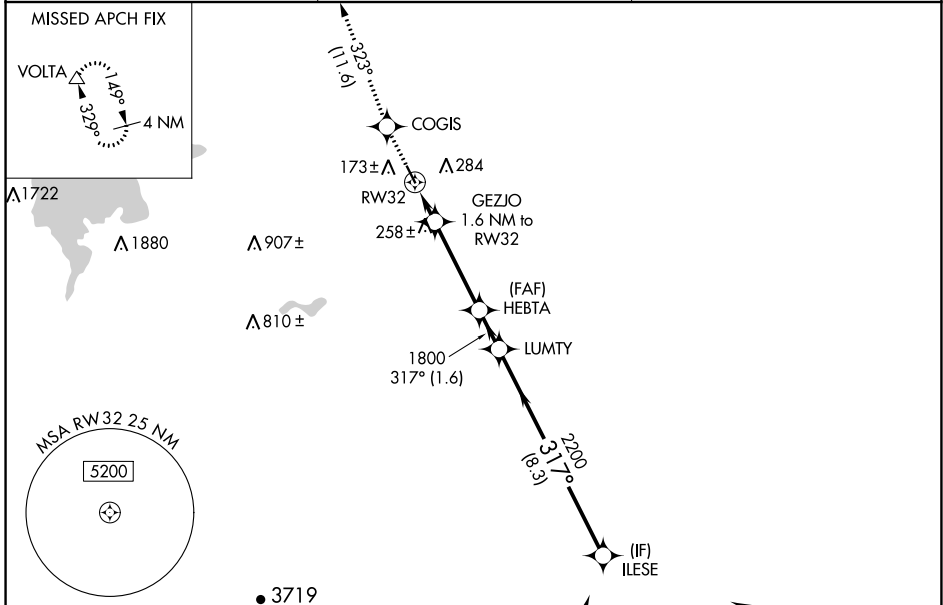
APP CRS <b>317°</b>	Rwy Idg <b>3801</b> TDZE <b>121</b> Apt Elev <b>121</b>
------------------------	---

# RNAV (GPS) RWY 32

LOS BANOS MUNI (LSN)

RNP APCH.	<p>▼ Rwy 32 helicopter visibility reduction below 3/4 SM NA. VDP NA when using Merced Yosemite Rgnl altimeter setting. When local altimeter setting not received, use Merced Yosemite Rgnl altimeter setting and increase all MDA 60 feet, and all visibility 1/4 SM.</p> <p>▲ NA MISSED APPROACH: Climb to 3000 direct COGIS and on track 323° to VOLTA and hold.</p>
-----------	--

AWOS-3 <b>118.675</b>	NORCAL APP CON <b>120.95 269.45</b>	UNICOM <b>122.8 (CTAF) 0</b>
--------------------------	--	---------------------------------



SW-2, 13 JUN 2024 to 11 JUL 2024

SW-2, 13 JUN 2024 to 11 JUL 2024