

| | | |
|--|------------------------|---|
| WAAS CH 69538 W01A | APP CRS 011° | Rwy Idg 4802 TDZE 358 Apt Elev 358 |
|--|------------------------|---|

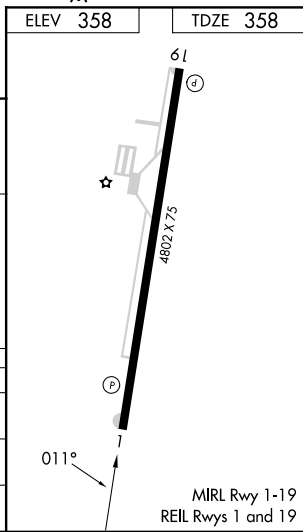
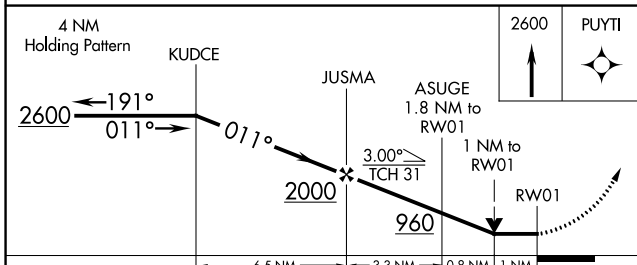
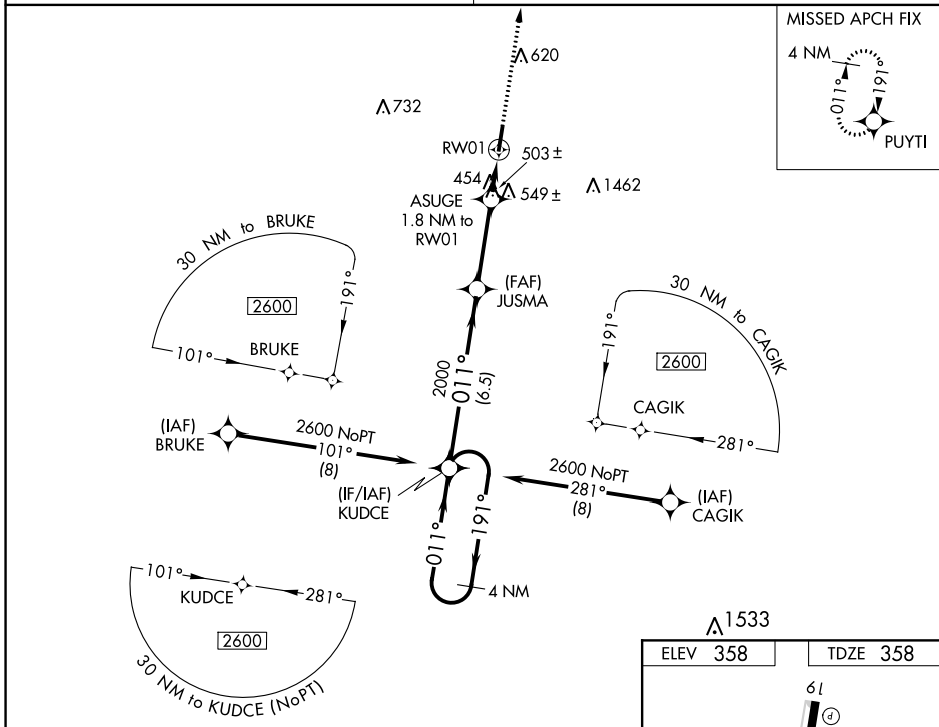
RNAV (GPS) RWY 1

GIBSON COUNTY (TGC)

▼ Night landing: Rwy 19 NA. DME/DME RNP-0.3 NA. Helicopter visibility reduction below 3/4 SM NA. Obtain local altimeter setting on CTAF; when not received use McKellar-Sipes Rgnl altimeter setting and increase all MDA 60 feet, increase Circling Cat C visibility 1/4 mile.

▲ NA MISSED APPROACH: Climb to 2600 direct PUYTI and hold.

MEMPHIS CENTER **134.65 316.15** UNICOM **122.8 (CTAF)**



| | | | | |
|-------------------|-------------------|---|--|---|
| CATEGORY | A | B | C | D |
| LP MDA | 720-1 362 (400-1) | | | |
| LNAV MDA | 800-1 442 (500-1) | | 800-1 3/8 442 (500-1 3/8) | |
| C CIRCLING | 980-1 622 (700-1) | | 980-1 3/4 622 (700-1 3/4) 1780-3 1422 (1500-3) | |

SE-1, 13 JUN 2024 to 11 JUL 2024

SE-1, 13 JUN 2024 to 11 JUL 2024