

WAAS CH 78402 W12A	APP CRS 123°	Rwy Idg TDZE Apt Elev	3588 1051 1051
--	------------------------	-----------------------------	---

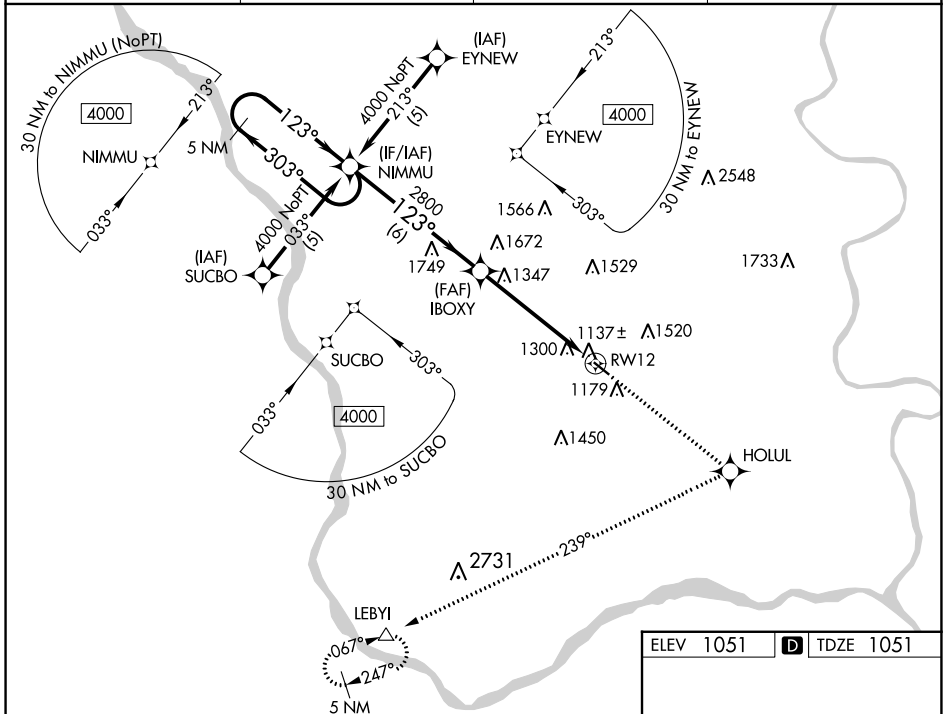
RNAV (GPS) RWY 12

MILLARD (MILE)

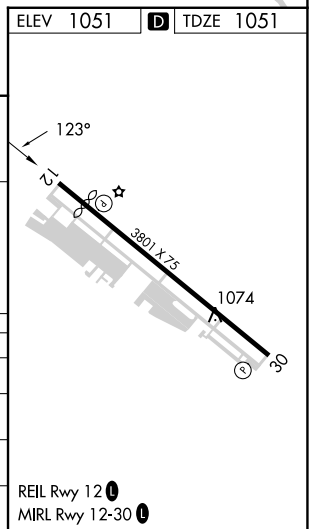
⚠ DME/DME RNP-0.3 NA. If local altimeter setting not received, use Council Bluffs Muni altimeter setting and increase all DAs/MDAs 80 feet. Baro-VNAV NA when using Council Bluffs Muni altimeter setting. For uncompensated Baro-VNAV systems, LNAV/VNAV NA below -17°C (2°F) or above 54°C (130°F). Visibility reduction by helicopters/NA.

MISSED APPROACH: Climb to 4000 direct HOLUL and right turn via 239° track to LEBYI and hold.

AWOS-3 118.25	OMAHA APP CON 120.1 354.05	CLNC DEL 125.4	UNICOM 123.0 (CTAF) 0
-------------------------	--------------------------------------	--------------------------	---------------------------------



5 NM Holding Pattern		NIMMU	4000	HOLUL	LEBYI
← 303°		→ 123°	↑	✧	↷ tr 239°
GP 3.00°		IBOXY	2800	RW12	△
TCH 39		← 6 NM	→ 5.3 NM		
CATEGORY	A	B	C	D	
LPV DA	1387-1¼	336 (400-1¼)			NA
LNAV/VNAV DA	1668-2	617 (700-2)			NA
LNAV MDA	1660-1	609 (700-1)			NA
CIRCLING	1700-2 649 (700-2)	1720-2 669 (700-2)			NA



NC-2, 13 JUN 2024 to 11 JUL 2024

NC-2, 13 JUN 2024 to 11 JUL 2024