

# RNAV (GPS) RWY 30

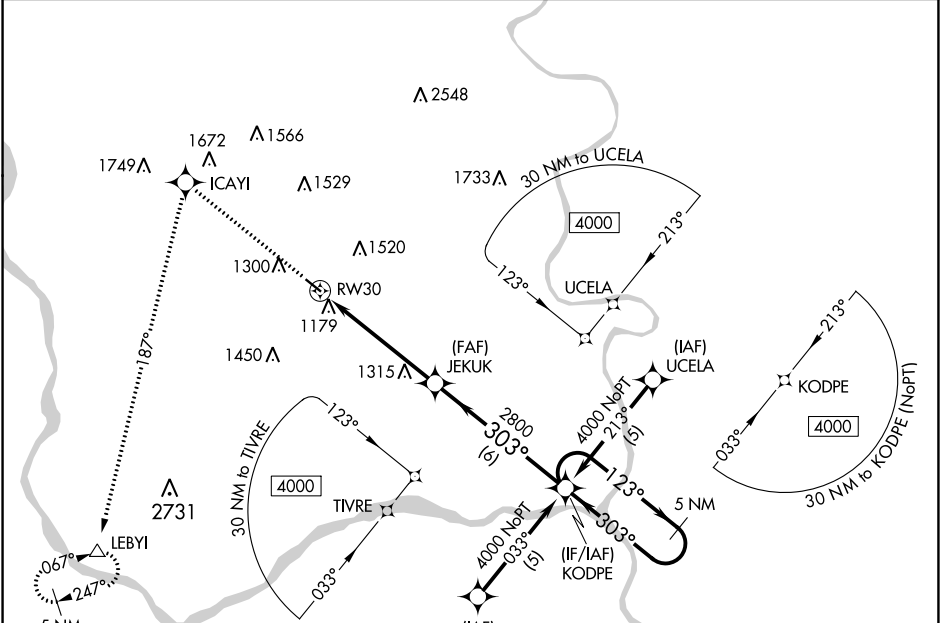
MILLARD (MILE)

APP CRS <b>303°</b>	Rwy Idg <b>3801</b>
	TDZE <b>1050</b>
	Apt Elev <b>1051</b>

**⚠** DME/DME RNP-0.3 NA. If local altimeter setting not received, use Council Bluffs Muni altimeter setting and increase all MDAs 80 feet. Visibility reduction by helicopters NA.

**MISSED APPROACH:** Climb to 4000 direct ICAYI and left turn via 187° track to LEBYI and hold.

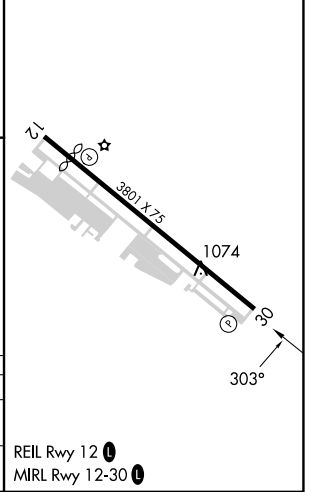
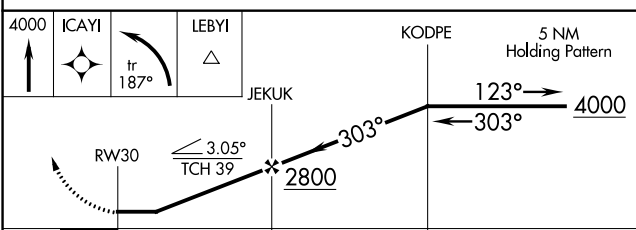
AWOS-3 <b>118.25</b>	OMAHA APP CON <b>120.1 354.05</b>	CLNC DEL <b>125.4</b>	UNICOM <b>123.0 (CTAF) <b>Ⓛ</b></b>
-------------------------	--------------------------------------	--------------------------	--



NC-2, 13 JUN 2024 to 11 JUL 2024

NC-2, 13 JUN 2024 to 11 JUL 2024

ELEV 1051	<b>D</b> TDZE 1050
-----------	--------------------



CATEGORY	A	B	C	D
LNVA MDA	1620-1	570 (600-1)		NA
CIRCLING	1700-1 649 (700-1)	1720-1 669 (700-1)		NA

REIL Rwy 12 **Ⓛ**  
MIRL Rwy 12-30 **Ⓛ**