

APP CRS **116°**  
 Rwy Idg **4304**  
 TDZE **869**  
 Apt Elev **869**

# RNAV (GPS) RWY 11

LUCE COUNTY (ERY)

RNP APCH - GPS.

**⚠** Circling NA to Rwys 4 and 22. Rwy 11 helicopter visibility reduction below 3/4 SM NA.  
**⚠** For uncompensated Baro-VNAV systems, LNAV/VNAV NA below -16°C or above 54°C.

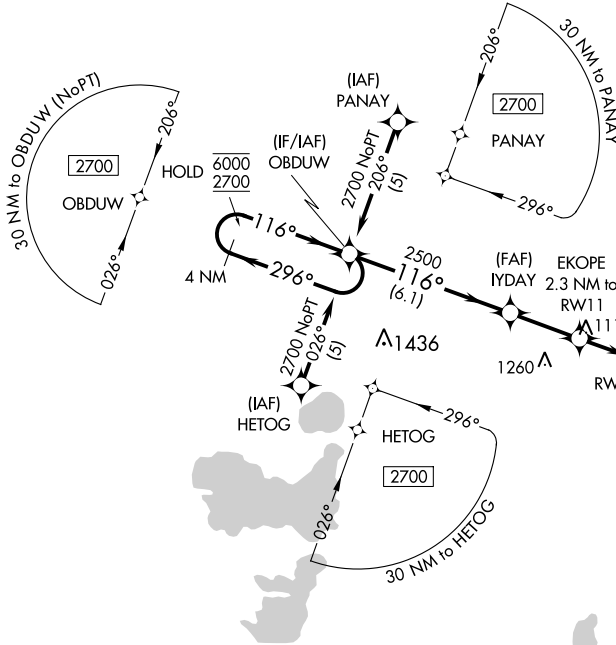
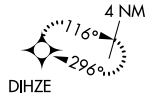
**MISSED APPROACH:**  
 Climb to 2700 direct  
 DIHZE and hold.

AWOS-3P  
**119.525**

MINNEAPOLIS CENTER  
**134.6 354.05**

UNICOM  
**122.8 (CTAF) 0**

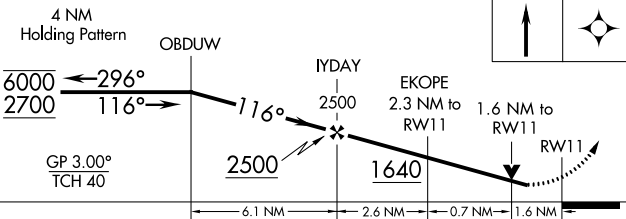
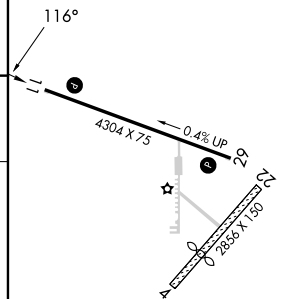
MISSED APCH FIX



EC-1, 13 JUN 2024 to 11 JUL 2024

EC-1, 13 JUN 2024 to 11 JUL 2024

ELEV **869** | TDZE **869**



CATEGORY	A	B	C	D
LNAV/DA VNAV	1259-1 1/8		390 (400-1 1/8)	
LNAV MDA	1420-1 551 (600-1)		1420-1 5/8 551 (600-1 5/8)	
CIRCLING	1420-1 551 (600-1)		1460-1 5/8 591 (600-1 5/8) 1560-2 1/4 691 (700-2 1/4)	

MIRL Rwy 11-29 **0**  
 REIL Rws 11 and 29 **0**