

BARTOW, FLORIDA

AL-5838 (FAA)

23278

VORTAC LAL 116.0 Chan 107	APP CRS 101°	Rwy Idg 5000 TDZE 125 Apt Elev 125
---	------------------------	---

VOR RWY 9L

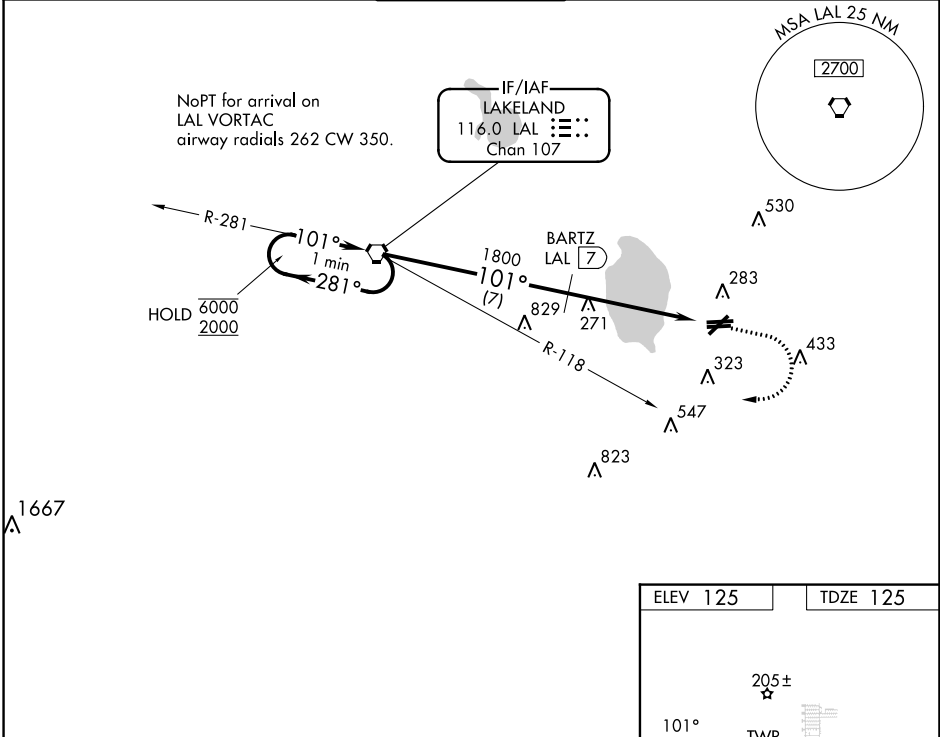
BARTOW EXEC (BOW)

DME required.

⚠ Circling Rwy 9R, 27L NA at night. Rwy 9L helicopter visibility reduction below 3/4 SM NA. When local altimeter setting not received, use Tampa Intl altimeter setting; increase all MDA 120 feet, increase S-9L Cat C/D visibility 3/8 SM and Circling Cat C/D visibility 1/2 SM. VDP NA when using Tampa Intl altimeter setting.

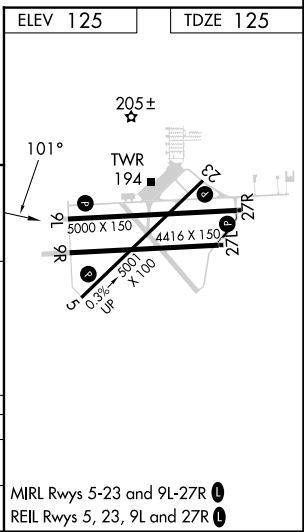
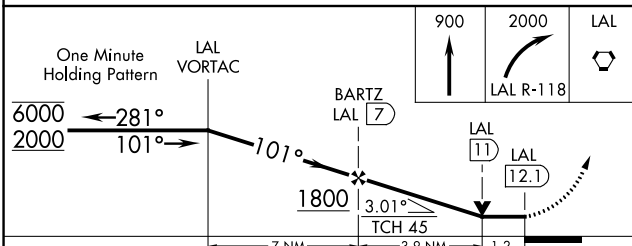
MISSED APPROACH: Climb to 900 then climbing right turn to 2000 on LAL VORTAC R-118 to LAL VORTAC and hold.

AWOS-3 123.775	TAMPA APP CON 120.65 290.3	BARTOW TOWER ★ 121.20 (CTAF)	GND CON 121.9	UNICOM 122.95
--------------------------	--------------------------------------	---	-------------------------	-------------------------



SE-3, 13 JUN 2024 to 11 JUL 2024

SE-3, 13 JUN 2024 to 11 JUL 2024



CATEGORY	A	B	C	D
S-9L	540-1	415 (500-1)	540-1 1/8	415 (500-1 1/8)
CIRCLING	600-1 475 (500-1)	680-1 555 (600-1)	680-1 1/2 555 (600-1 1/2)	840-2 1/4 715 (800-2 1/4)

MIRL Rwy 5-23 and 9L-27R **⚠**
REIL Rwy 5, 23, 9L and 27R **⚠**

BARTOW, FLORIDA
Amdt 2G 30DEC21

27°57'N-81°47'W

BARTOW EXEC (BOW)

VOR RWY 9L