

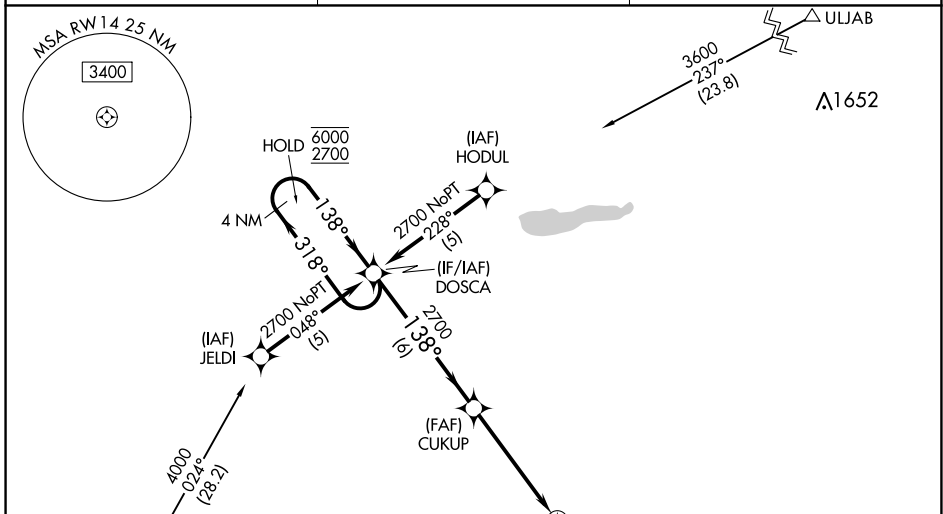
WAAS CH <b>49210</b> <b>W14A</b>	APP CRS <b>138°</b>	Rwy Idg TDZE Apt Elev	<b>4000</b> <b>1039</b> <b>1039</b>
--	------------------------	-----------------------------	---

# RNAV (GPS) RWY 14

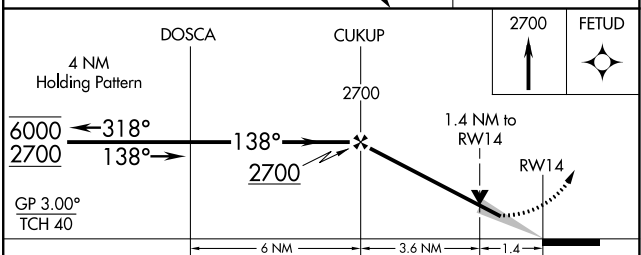
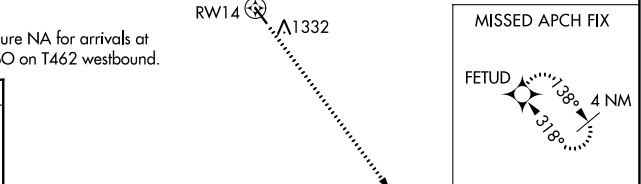
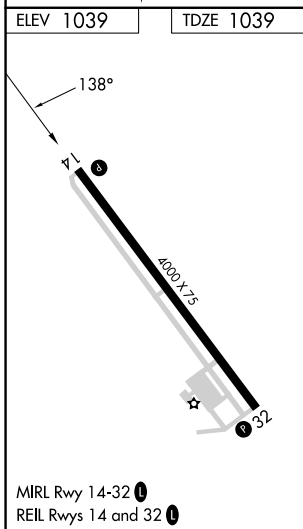
BENSON MUNI (BBB)

RNP APCH - GPS.	<p>MISSED APPROACH: Climb to 2700 direct FETUD and hold.</p>
<p>▼ For uncompensated Baro-VNAV systems, LNAV/VNAV NA below -17°C or above 54°C. Baro-VNAV and VDP NA when using Appleton altimeter setting. When local altimeter setting not received, use Appleton altimeter setting and increase LPV DA to 1422 feet and all visibilities 1/8 SM; increase LNAV/VNAV DA to 1466 feet and all visibilities 1/8 SM; increase all MDAs 40 feet.</p>	

AWOS-3PT <b>118.45</b>	MINNEAPOLIS CENTER <b>125.5 323.1</b>	UNICOM <b>122.8 (CTAF)</b>
---------------------------	--	-------------------------------



ELEV 1039	TDZE 1039
-----------	-----------



CATEGORY	A	B	C	D
LPV DA	1382-1	343 (400-1)	NA	
LNAV/VNAV DA	1426-1 1/8	387 (400-1 1/8)	NA	
LNAV MDA	1540-1	501 (600-1)	NA	

NC-1, 13 JUN 2024 to 11 JUL 2024

NC-1, 13 JUN 2024 to 11 JUL 2024