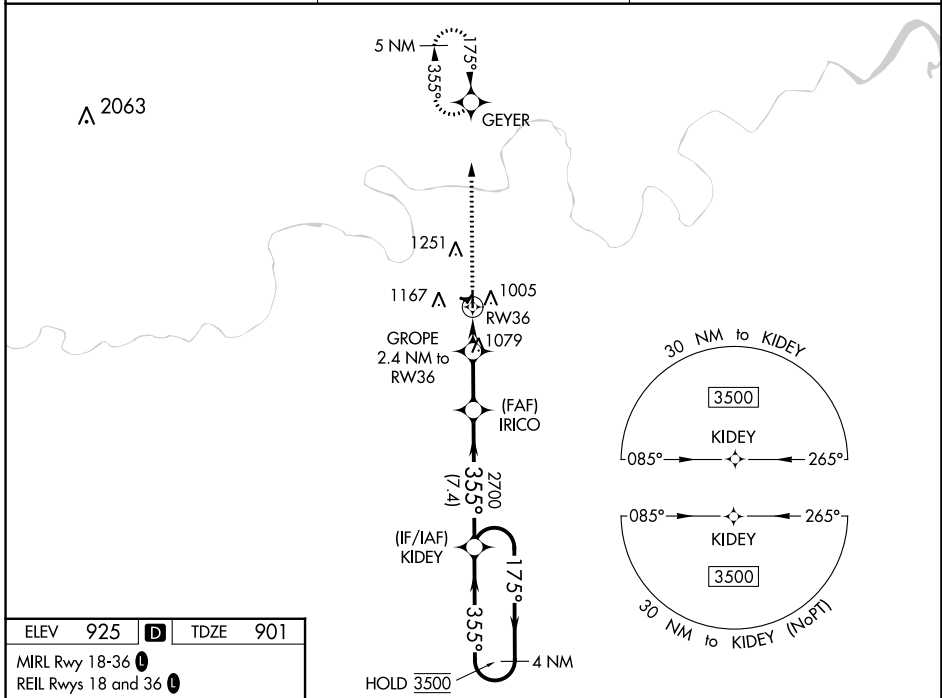


WAAS CH <b>90142</b> <b>W36A</b>	APP CRS <b>355°</b>	Rwy Idg TDZE Apt Elev	<b>4986</b> <b>901</b> <b>925</b>
--	------------------------	-----------------------------	---

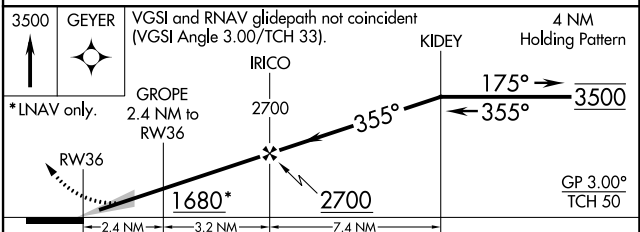
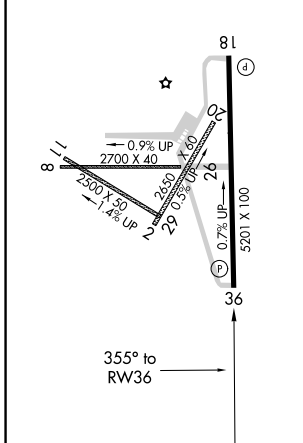
# RNAV (GPS) RWY 36

CUSHING MUNI (CUH)

RNP APCH.		MISSED APPROACH: Climb to 3500 direct GEYER and hold, continue to climb-in-hold to 3500.
<p><b>⚠</b> For uncompensated Baro-VNAV systems, LNAV/VNAV NA below -16°C or above 54°C. Circling NA to Rwy's 2, 8, 11, 20, 26, and 29.</p>		
AWOS-3PT <b>118.25</b>	KANSAS CITY CENTER <b>127.8 319.1</b>	UNICOM <b>122.8 (CTAF)</b> <b>📻</b>



ELEV <b>925</b> <b>D</b>	TDZE <b>901</b>
MIRL Rwy 18-36 <b>📻</b>	REIL Rwy's 18 and 36 <b>📻</b>



CATEGORY	A	B	C	D
LPV DA	1151-7/8		250 (300-7/8)	
LNAV/VNAV DA	1284-1 1/4		383 (400-1 1/4)	
LNAV MDA	1340-1	439 (500-1)	1340-1 1/4	439 (500-1 1/4)
<b>C</b> CIRCLING	1600-1	675 (700-1)	1600-2 675 (700-2)	1600-2 1/4 675 (700-2 1/4)

SC-1, 13 JUN 2024 to 11 JUL 2024

SC-1, 13 JUN 2024 to 11 JUL 2024