

WAAS CH 66008 W18A	APP CRS 181°	Rwy Idg 5002 TDZE 239 Apt Elev 239
--	------------------------	---

RNAV (GPS) RWY 18

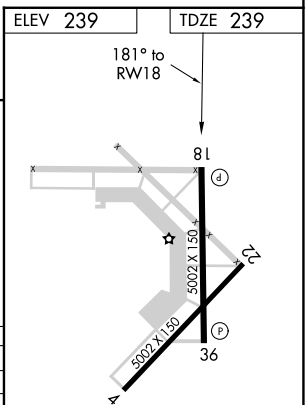
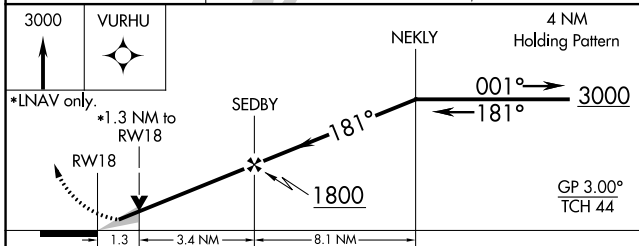
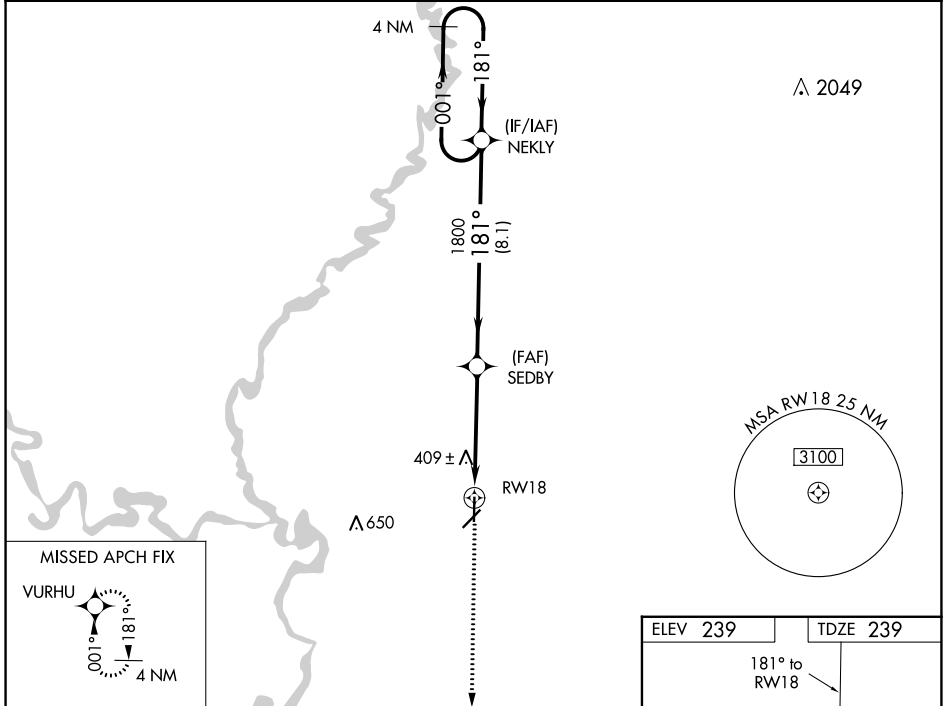
NEWPORT RGNL (M19)

RNP APCH-GPS.

▼ When local altimeter setting not received, use Batesville altimeter setting: increase LPV DA to 575 feet and all visibilities ½ SM; increase LNAV/VNAV DA to 845 feet and all visibilities ½ SM; increase all MDAs 100 feet and visibility Cats C ¼ SM and D ½ SM. VDP NA when using Batesville altimeter setting. For uncompensated Baro-VNAV systems, LNAV/VNAV NA below -15°C or above 54°C. Baro-VNAV NA when using Batesville altimeter setting.

MISSED APPROACH: Climb to 3000 direct VURHU and hold.

AWOS-3PT 118.15	MEMPHIS CENTER 120.075 289.4	UNICOM 122.8 (CTAF) ①
---------------------------	--	---------------------------------



CATEGORY	A	B	C	D
LPV DA	489-3/4 250 (300-3/4)			
LNAV/VNAV DA	759-13/4 520 (600-13/4)			
LNAV MDA	700-1	461 (500-1)	700-1 1/4 461 (500-1 1/4)	700-1 1/2 461 (500-1 1/2)
CIRCLING	760-1	521 (600-1)	760-1 1/2 521 (600-1 1/2)	900-2 661 (700-2)

REIL Rwy 18 and 36
MIRL Rwy 18-36 ①

SC-1, 13 JUN 2024 to 11 JUL 2024

SC-1, 13 JUN 2024 to 11 JUL 2024