

APP CRS	Rwy Idg	<b>5002</b>
<b>102°</b>	TDZE	<b>73</b>
	Apt Elev	<b>73</b>

# RNAV (GPS) RWY 10

BERMUDA DUNES (UDD)

RNP APCH - GPS.

▼ Use Jacqueline Cochran Rgnl altimeter setting.  
 ▲ NA Circling Rwy 28 NA at night.

MISSED APPROACH: Climb to 3700 direct CILCA and via 130° track to HENOM and hold.

TRM ASOS

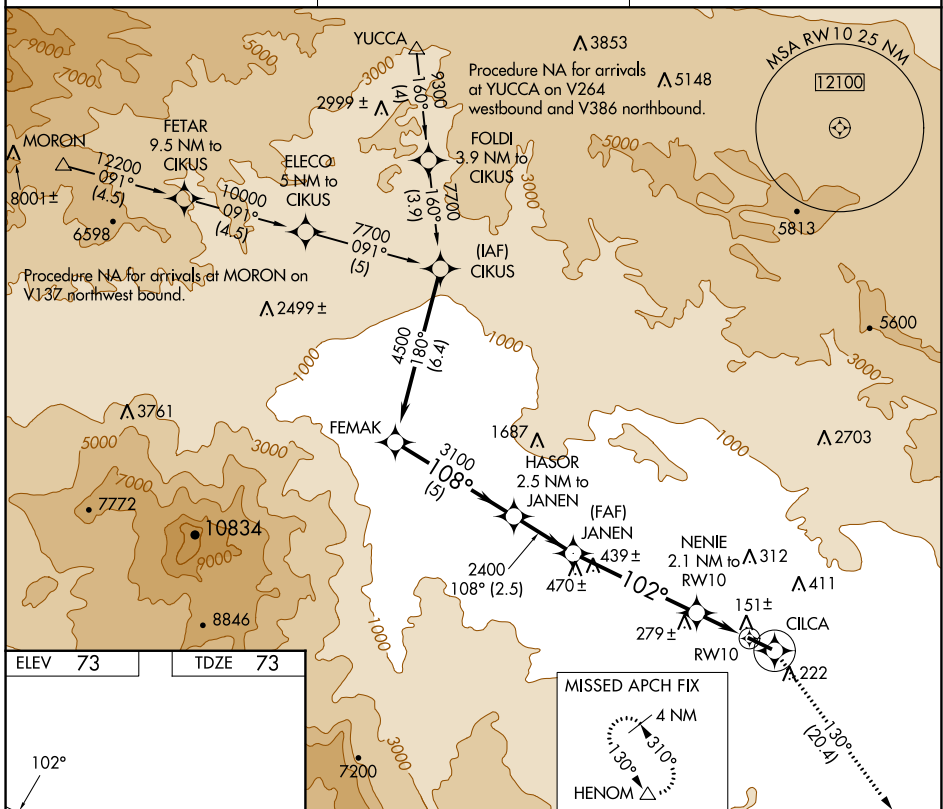
**118.325**

SOCAL APP CON \*

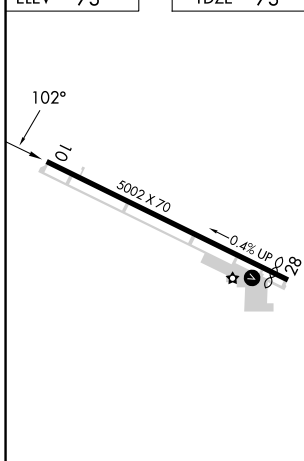
**135.275 251.1**

UNICOM

**122.8 (CTAF) 0**



ELEV	73	TDZE	73
------	----	------	----



REIL Rwy 28	MIRL Rwy 10-28
-------------	----------------

	FEMAK	HASOR 2.5 NM to JANEN	JANEN	3700	CILCA	HENOM
	4500	3100	2400	3700	800	130° Ir
Procedure Turn NA	5 NM	2.5 NM	4.9 NM	2.1 NM		
CATEGORY	A	B	C	D		
LNAV MDA	480-1	407 (500-1)	480-1¼ 407 (500-1¼)	NA		
CIRCLING	700-1	627 (700-1)	1100-3 1027 (1100-3)	NA		

SW-3, 13 JUN 2024 to 11 JUL 2024

SW-3, 13 JUN 2024 to 11 JUL 2024