

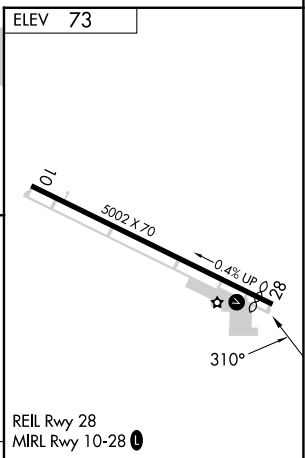
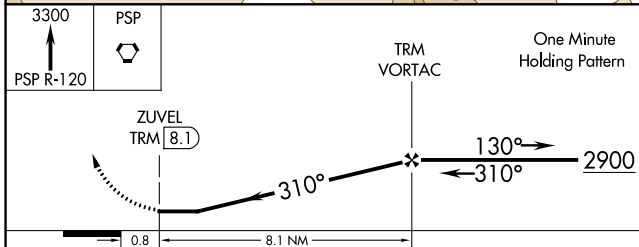
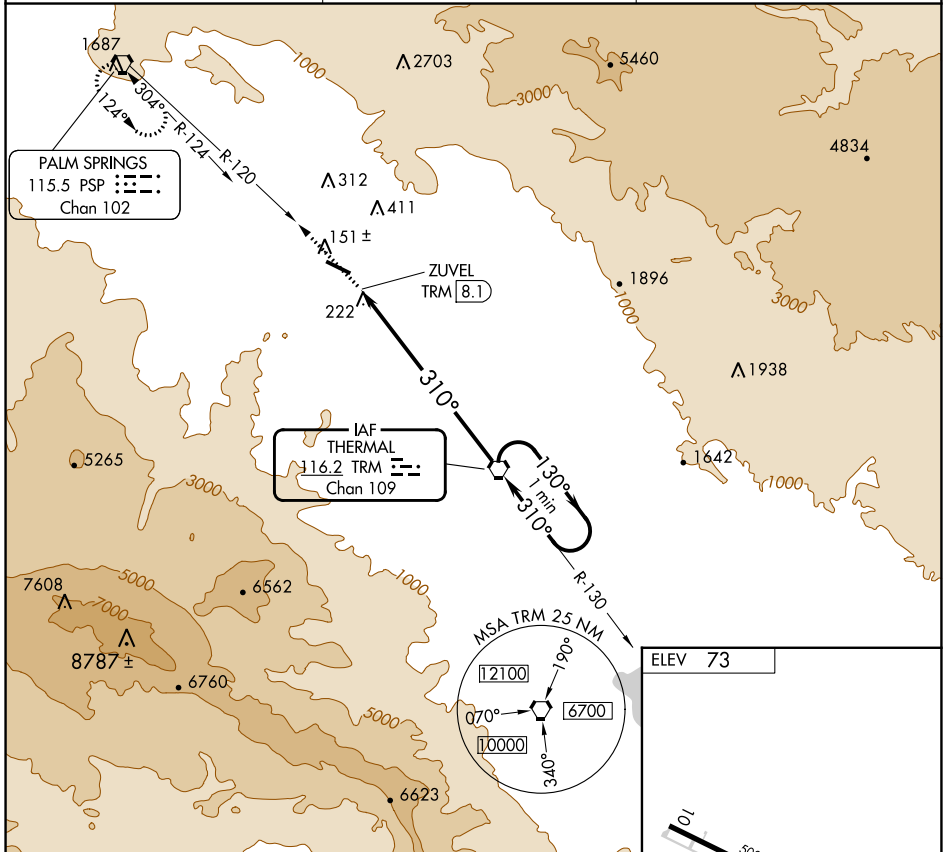
VORTAC TRM <b>116.2</b> Chan <b>109</b>	APP CRS <b>310°</b>	Rwy Idg TDZE Apt Elev <b>73</b>	N/A N/A
---	------------------------	--	------------

**VOR-C**  
BERMUDA DUNES (UDD)

Use Jacqueline Cochran Rgnl altimeter setting.  
Circling to Rwy 28 NA at night.

MISSED APPROACH: Climb to 3300 via PSP R-120 to PSP VORTAC and hold.

TRM ASOS <b>118.325</b>	SOCAL APP CON ★ <b>135.275 251.1</b>	UNICOM <b>122.8</b> (CTAF) <b>0</b>
----------------------------	---	--



CATEGORY	A	B	C	D	FAF to MAP 8.1 NM					
CIRCLING	960-1¼	887 (900-1¼)	1100-3 1027 (1100-3)	NA	Knots	60	90	120	150	180
					Min:Sec	8:06	5:24	4:03	3:14	2:42

SW-3, 13 JUN 2024 to 11 JUL 2024

SW-3, 13 JUN 2024 to 11 JUL 2024