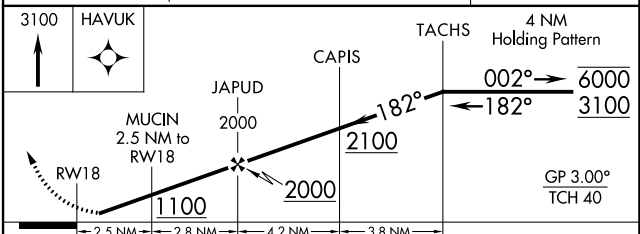
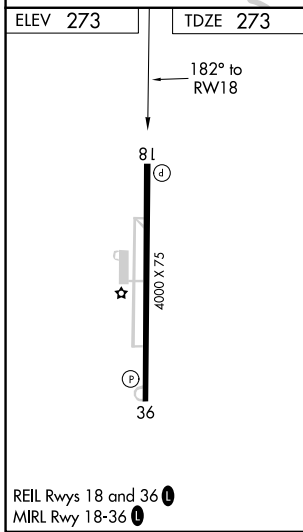
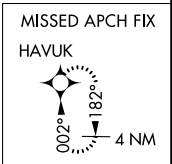
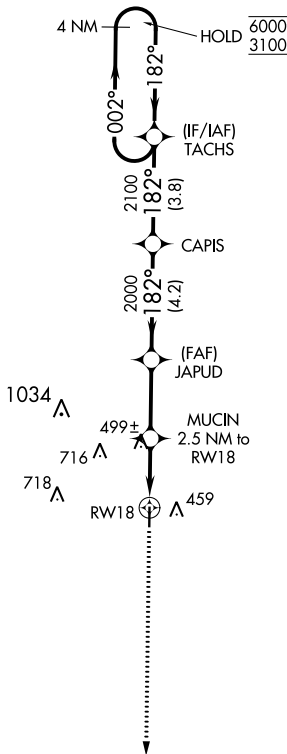
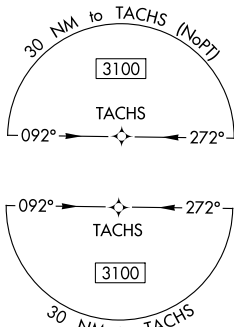


WAAS CH 45543 W18A	APP CRS 182°	Rwy Idg TDZE 273 Apt Elev 273
--	------------------------	---

RNAV (GPS) RWY 18

POCAHONTAS MUNI (M7 \emptyset)

RNP APCH.		MISSED APPROACH: Climb to 3100 direct HAVUK and hold.
<p>▼ Rwy 18 helicopter visibility reduction below $\frac{3}{4}$ SM NA. ▲ Baro-VNAV NA. Use Walnut Ridge altimeter setting.</p>		
ARG AWOS-3PT 126.525	MEMPHIS CENTER 120.075 289.4	UNICOM 122.8 (CTAF) \emptyset



CATEGORY	A	B	C	D
LPV DA	571-1 298 (300-1)			
RNAV/VNAV DA	733-1 $\frac{3}{8}$ 460 (500-1 $\frac{3}{8}$)			
RNAV MDA	780-1 507 (600-1)		780-1 $\frac{3}{8}$ 507 (600-1 $\frac{3}{8}$)	
C CIRCLING	900-1 627 (700-1)		1100-2 $\frac{1}{2}$ 827 (900-2 $\frac{1}{2}$)	1100-2 $\frac{3}{4}$ 827 (900-2 $\frac{3}{4}$)

SC-1, 13 JUN 2024 to 11 JUL 2024

SC-1, 13 JUN 2024 to 11 JUL 2024