

# KILNS FIVE DEPARTURE (RNAV)

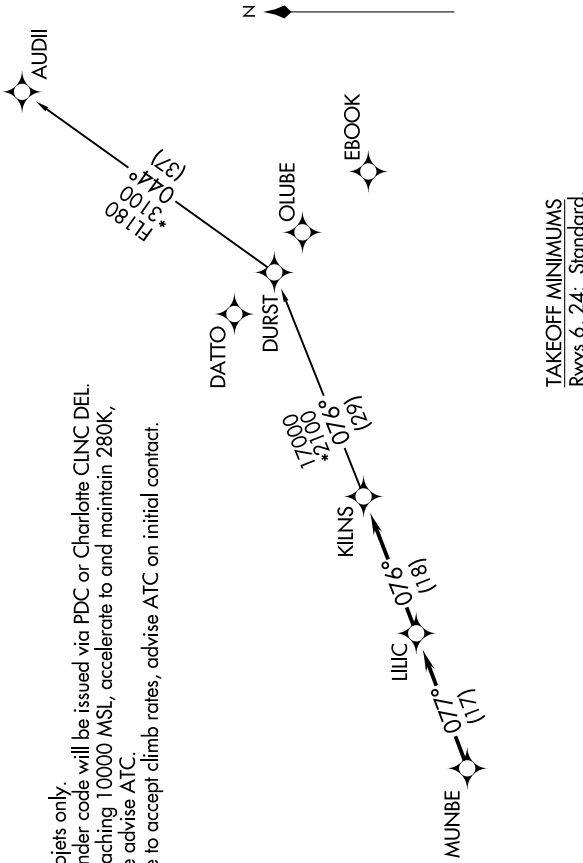
SE-2, 13 JUN 2024 to 11 JUL 2024

CHARLOTTE DEP CON  
120.05 307.8  
AWOS-3  
120.825  
GCO  
121.725  
UNICOM (CTAF)  
122.725

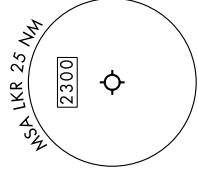
RNAV 1 - DME/DME/IRU or GPS.  
RADAR required.

NOTE: For turboprops only.  
NOTE: Transponder code will be issued via PDC or Charlotte CLNC DEL.  
NOTE: Upon reaching 10000 MSL, accelerate to and maintain 280K, if unable advise ATC.  
NOTE: If unable to accept climb rates, advise ATC on initial contact.

**TOP ALTITUDE:  
3000**



TAKEOFF MINIMUMS  
Rwys 6, 24: Standard.



## DEPARTURE ROUTE DESCRIPTION

Climb on heading assigned by ATC, on RADAR vectors to MUNBE, then on depicted route to KILNS, then on AUDII Transition. Maintain 3000. Expect clearance to filed altitude within 10 minutes after departure.

## AUDII TRANSITION (KILNS5-AUDII)

NOTE: Chart not to scale.

SE-2, 13 JUN 2024 to 11 JUL 2024

# KILNS FIVE DEPARTURE (RNAV)