

CHARLOTTE DEP CON  
 120.05 307.8  
 AWOS-3  
 120.825  
 GCO  
 121.725  
 UNICOM (CTAF)  
 122.725

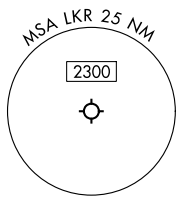
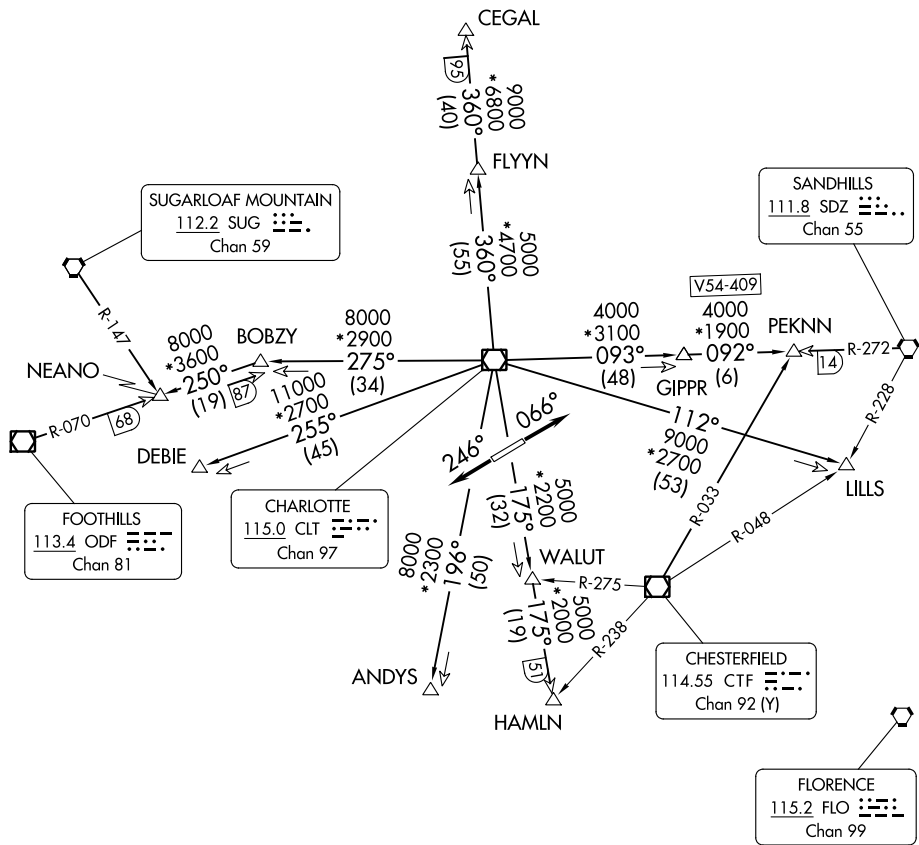
**TOP ALTITUDE:  
 3000**

RADAR and DME required.

TAKEOFF MINIMUMS  
 Rwy's 6, 24: Standard.

SE-2, 13 JUN 2024 to 11 JUL 2024

SE-2, 13 JUN 2024 to 11 JUL 2024



NOTE: For propeller aircraft only.  
 NOTE: Turboprops: Operate in a manner that will result in best forward speed and climb rate.  
 NOTE: Transponder code will be issued via Charlotte clearance delivery.

(CONTINUED ON FOLLOWING PAGE)

NOTE: Chart not to scale.