

(KWEEN5.KWEEN) 24081

AL-5853 (FAA)

# KWEEN FIVE DEPARTURE (RNAV)

LANCASTER COUNTY-MC WHIRTER FLD (LKR)  
LANCASTER, SOUTH CAROLINA

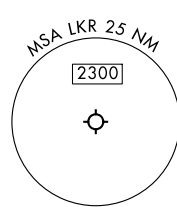
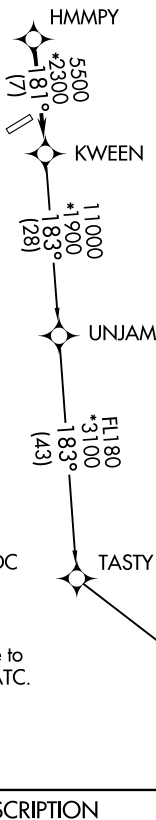
CHARLOTTE DEP CON  
120.05 307.8  
AWOS-3  
120.825  
GCO  
121.725  
UNICOM  
122.725

RNAV 1 - DME/DME/IRU or GPS.

RADAR required.

**TOP ALTITUDE:  
3000**

TAKEOFF MINIMUMS  
Rwys 6, 24: Standard.



- NOTE: For turbo jets only.
- NOTE: Transponder code will be issued via PDC or Charlotte CLNC DEL.
- NOTE: If unable to accept climb rates, advise ATC on initial contact.
- NOTE: Upon reaching 10000 MSL, accelerate to and maintain 280K, if unable advise ATC.

NOTE: Chart not to scale.

**DEPARTURE ROUTE DESCRIPTION**

Climb on heading assigned by ATC, on RADAR vectors to HMMPY, then on track 181° to KWEEN, then on assigned transition, maintain 3000, expect filed altitude within 10 minutes after departure.

PITRW TRANSITION (KWEEN5.PITRW)  
UNJAM TRANSITION (KWEEN5.UNJAM)

**KWEEN FIVE DEPARTURE (RNAV)**  
(KWEEN5.KWEEN) 21MAR24

LANCASTER, SOUTH CAROLINA  
LANCASTER COUNTY-MC WHIRTER FLD (LKR)

SE-2, 13 JUN 2024 to 11 JUL 2024

SE-2, 13 JUN 2024 to 11 JUL 2024