

VORTAC SQS 114.7 Chan 94	APP CRS 324°	Rwy Idg TDZE Apt Elev N/A N/A 137
--	------------------------	---

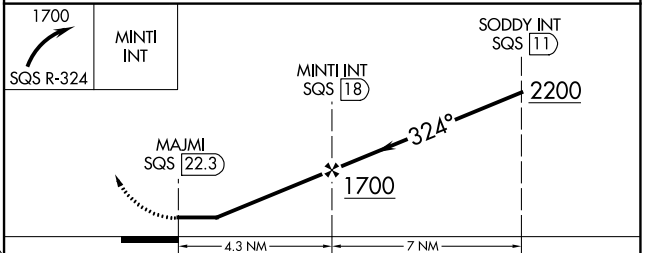
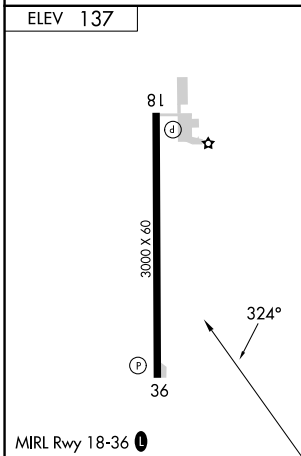
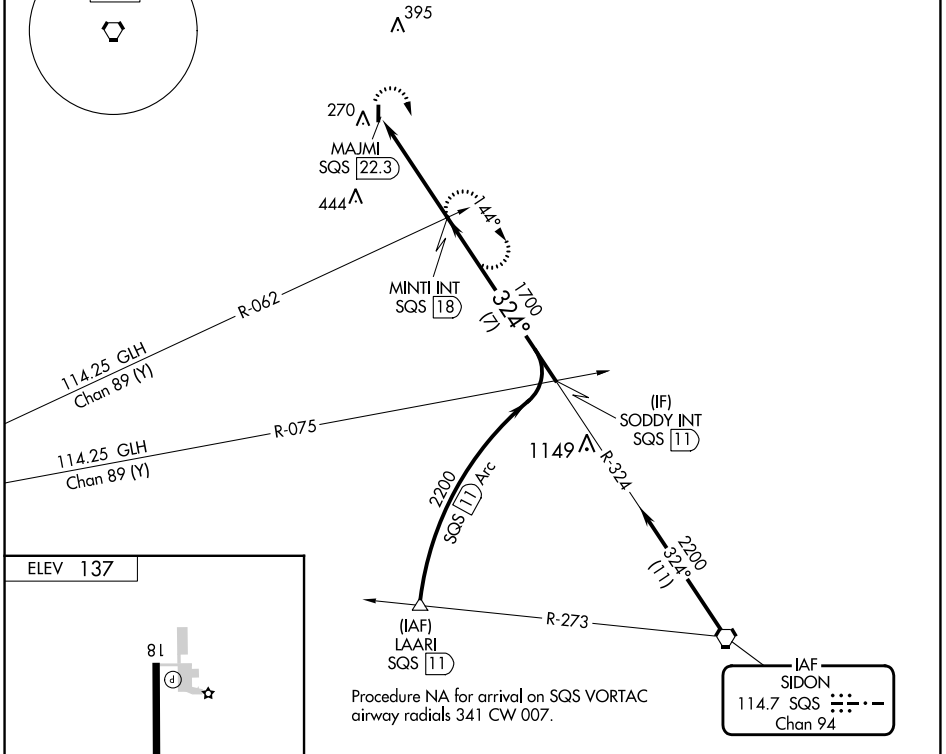
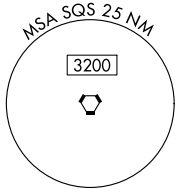
VOR-A

RULEVILLE-DREW (M37)

▽ Rwy 18 and 36 helicopter visibility reduction below 1 SM NA. Use Cleveland altimeter setting; when not received, use Greenwood altimeter setting and increase all MDAs 40 feet, increase Cat C visibility 1/4 SM. Procedure NA at night.
△ NA MISSED APPROACH: Climbing right turn to 1700 on SQS VORTAC R-324 to MINTI INT/SQS 18 DME and hold.

MEMPHIS CENTER
135.875 269.35

CTAF
122.9



FAF to MAP 4.3 NM					
Knots	60	90	120	150	180
Min:Sec	4:18	2:52	2:09	1:43	1:26
☑ CIRCLING	A 620-1 483 (500-1)		B 720-1 583 (600-1)		C 780-1 ³ / ₄ 643 (700-1 ³ / ₄)
	D NA				

SC-4, 13 JUN 2024 to 11 JUL 2024

SC-4, 13 JUN 2024 to 11 JUL 2024