

WAAS CH 58224 W18A	APP CRS 182°	Rwy Idg TDZE Apt Elev	8498 23 23
--	------------------------	-----------------------------	---------------------------------------

RNAV (GPS) RWY 18

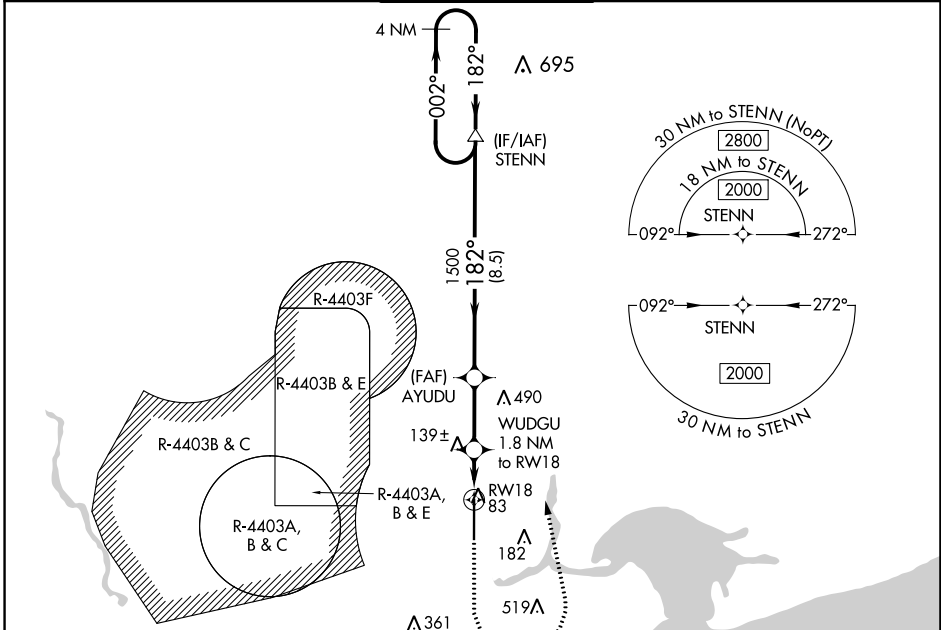
STENNIS INTL (HSA)

⚠ For uncompensated Baro-VNAV systems, LNAV/VNAV NA below -15°C (5°F) or above 54°C (130°F). Circling NA for Cat E west of Rwy 18-36. Baro-VNAV and VDP NA when using Gulfport altimeter setting. DME/DME RNP-0.3 NA. When local altimeter setting not received, use Gulfport altimeter setting: increase LPV DA to 247 feet; increase LNAV/VNAV DA to 373 feet; increase all MDA 60 feet and LNAV Cats C/D/E visibility 1/8 mile, and Circling Cats D/E visibility 1/4 mile. For inop MALSRR, increase LNAV Cats C/D/E visibility to 1 mile. For inop MALSRR when using Gulfport altimeter setting, increase LNAV Cat E visibility to 1 1/4 mile.

MALSRR

MISSED APPROACH: Climb to 1400, then climbing left turn to 2000 direct STENN and hold.

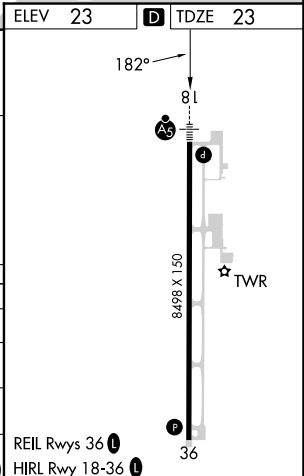
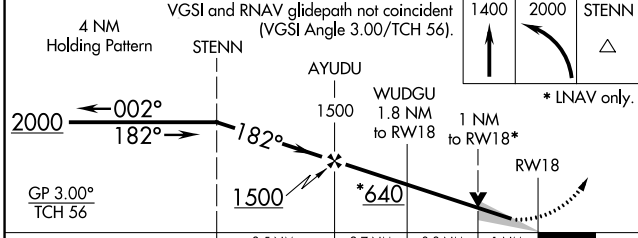
AWOS-3PT 118.375	GULFPORT APP CON* 124.6 354.1 (130°-309°) 127.5 254.25 (310°-129°)	STENNIS TOWER* 127.15 (CTAF) 229.4	GND CON 121.725 229.4	UNICOM 122.95
----------------------------	--	---	---------------------------------	-------------------------



SC-4, 13 JUN 2024 to 11 JUL 2024

SC-4, 13 JUN 2024 to 11 JUL 2024

ELEV 23	D TDZE 23
---------	------------------



CATEGORY	A	B	C	D	E
LPV DA		223-1/2	200 (200-1/2)		
LNAV/VNAV DA		326-1/2	303 (400-1/2)		
LNAV MDA	400-1/2	377 (400-1/2)	400-5/8	377 (400-5/8)	
C CIRCLING	480-1	457 (500-1)	520-1 1/2 497 (500-1 1/2)	820-2 1/2 797 (800-2 1/2)	820-2 3/4 797 (800-2 3/4)