

WAAS CH 63109 W36A	APP CRS 002°	Rwy Idg 8498 TDZE 15 Apt Elev 23
--	------------------------	---

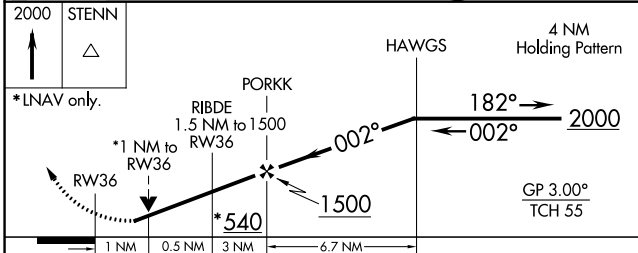
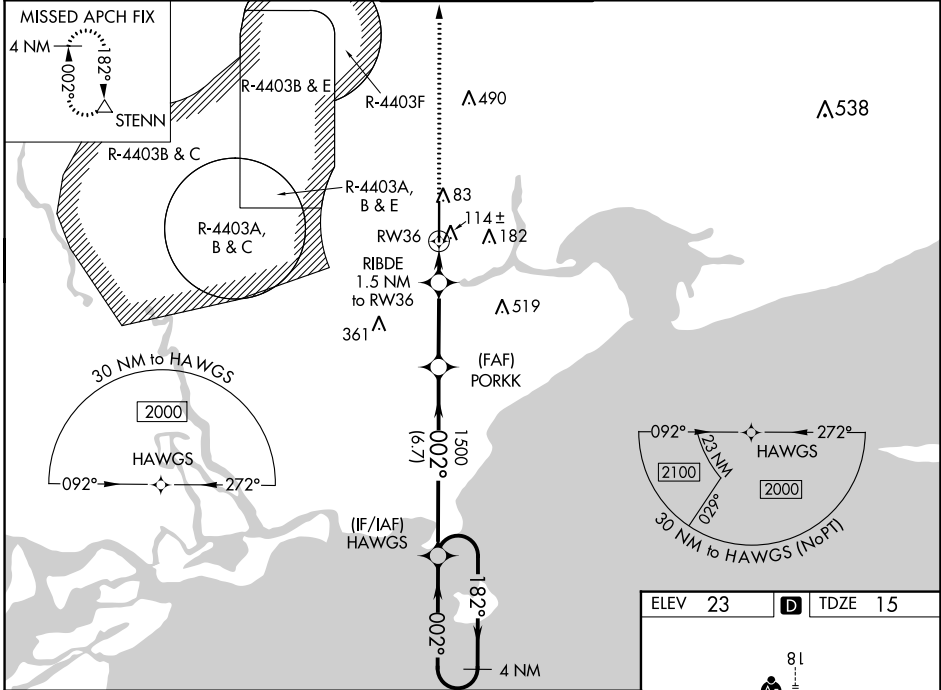
RNAV (GPS) RWY 36

STENNIS INTL (HSA)

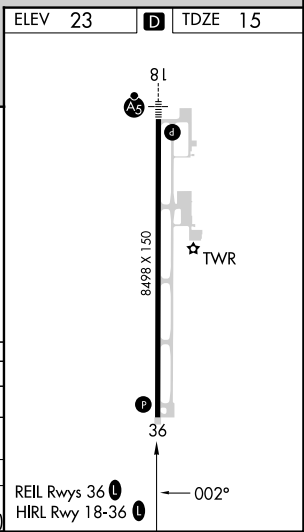
⚠ For uncompensated Baro-VNAV systems, LNAV/VNAV NA below -15°C (5°F) or above 54°C (130°F). Circling NA for Cat E West of Rwy 18-36. DME/DME RNP-0.3 NA. Helicopter visibility reduction below 3/4 SM NA. Baro-VNAV and VDP NA when using Gulfport altimeter setting. When local altimeter setting not received, use Gulfport altimeter setting and increase LPV DA to 332 feet and LNAV/VNAV DA to 344 feet and all MDA 60 feet; increase LPV and LNAV/VNAV all Cats visibility 1/8 mile and LNAV Cats C/D/E and Circling Cats D/E visibility 1/4 mile.

MISSED APPROACH: Climb to 2000 direct STENN and hold.

AWOS-3PT 118.375	GULFPORT APP CON ★ 124.6 354.1 (130°-309°) 127.5 254.25 (310°-129°)	STENNIS TOWER ★ 127.15 (CTAF) 0 229.4	GND CON 121.725 229.4	UNICOM 122.95
----------------------------	---	--	---------------------------------	-------------------------



CATEGORY	A	B	C	D	E
LPV DA		285-7/8	270 (300-7/8)		
LNAV/VNAV DA		297-7/8	282 (300-7/8)		
LNAV MDA		380-1	365 (400-1)		
CIRCLING	480-1	457 (500-1)	520-1 1/2 497 (500-1 1/2)	820-2 1/2 797 (800-2 1/2)	820-2 3/4 797 (800-2 3/4)



SC-4, 13 JUN 2024 to 11 JUL 2024

SC-4, 13 JUN 2024 to 11 JUL 2024