

LOC/DME I-PVG 110.75 Chan 44 (Y)	APP CRS 102°	Rwy Idg TDZE Apt Elev	5350 28 28
--	------------------------	-----------------------------	---------------------------------------

ILS or LOC RWY 10

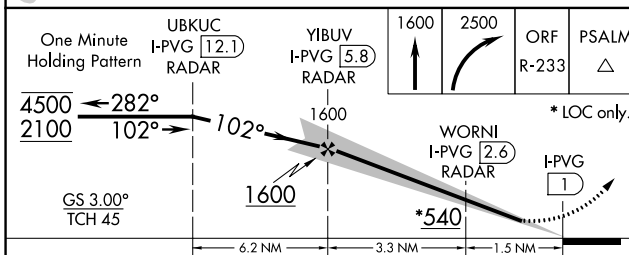
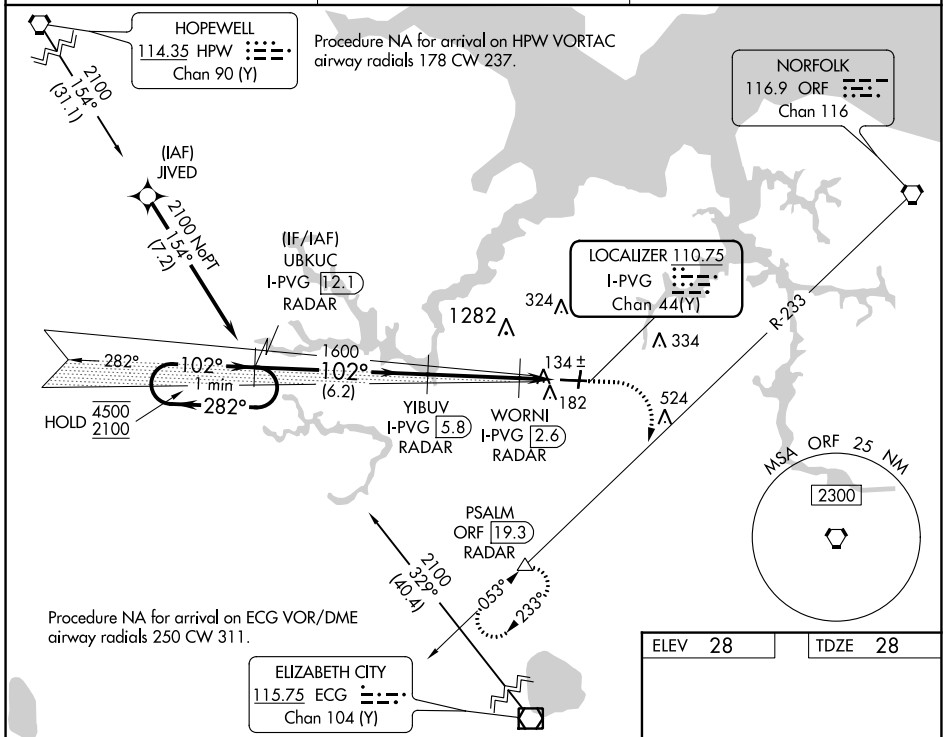
HAMPTON ROADS EXEC (PVG)

RNAV 1-GPS or RADAR required for procedure entry. DME or RADAR required.

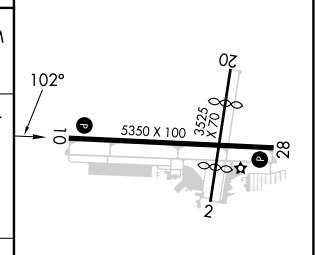
▼ Circling NA to Rwy's 2 and 20. Circling NA for Cat C north of Rwy's 10-28.
▲ NA Autopilot coupled approach NA below 800.

MISSED APPROACH: Climb to 1600 then climbing right turn to 2500 on ORF VORTAC R-233 to PSALM/ORF 19.3 DME/RADAR and hold.

AWOS-3PT 118.375	NORFOLK APP CON 118.9 353.7	UNICOM 122.725 (CTAF)
----------------------------	---------------------------------------	---------------------------------



ELEV 28	TDZE 28
---------	---------



CATEGORY	A	B	C	D
S-ILS 10	228- ³ / ₄	200 (200- ³ / ₄)		NA
S-LOC 10	400-1	372 (400-1)		NA
C CIRCLING	500-1	472 (500-1)	780-2 ¹ / ₄ 752 (800-2 ¹ / ₄)	NA

HIRL Rwy 10-28 **1**
 REIL Rwy's 10 and 28 **1**
 MIRL Rwy's 2-20 **1**

FAF to MAP 4.8 NM

Knots	60	90	120	150	180
Min:Sec	4:48	3:12	2:24	1:55	1:36

NE-3, 13 JUN 2024 to 11 JUL 2024

NE-3, 13 JUN 2024 to 11 JUL 2024