

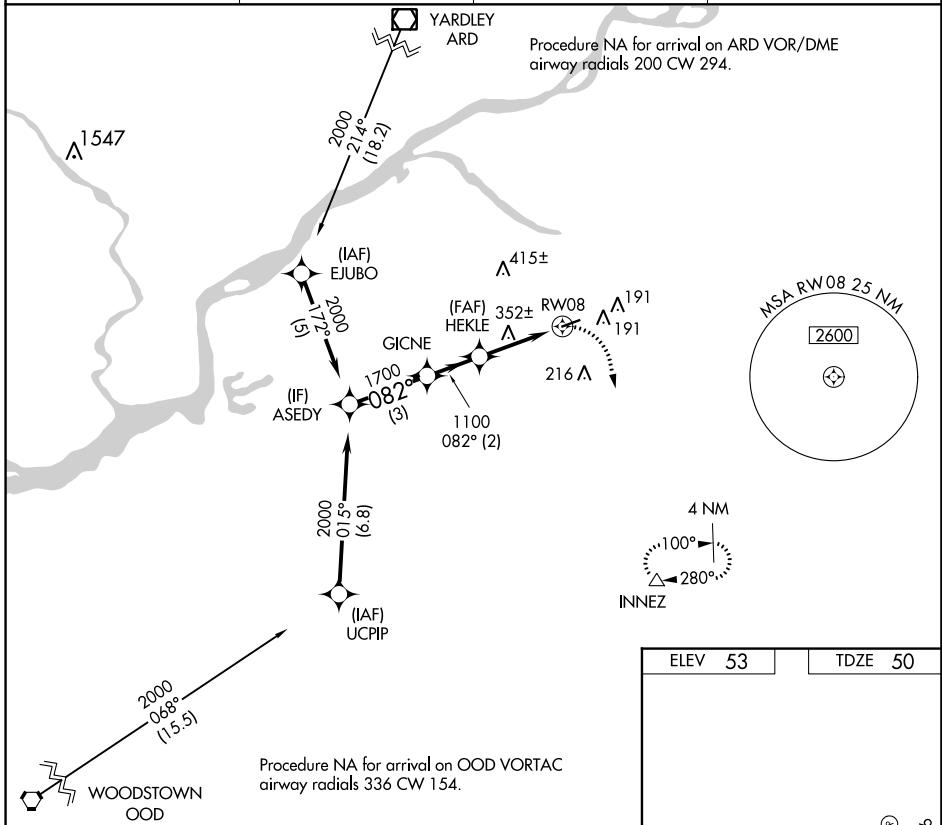
WAAS CH 69324 W08A	APP CRS 082°	Rwy Idg TDZE Apt Elev	3881 50 53
--	------------------------	-----------------------------	---------------------------------------

RNAV (GPS) RWY 8

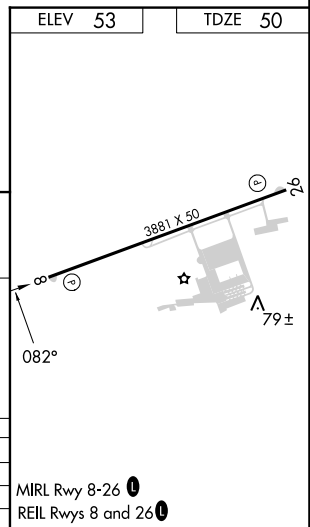
SOUTH JERSEY RGNL (VAY)

RNP APCH.	MISSED APPROACH: Climbing right turn to 2000 direct INNEZ and hold.
<p>▼ Procedure NA at night.</p> <p>▲ Rwy 8 helicopter visibility reduction below 1 SM NA.</p>	

ASOS 119.325	MC GUIRE APP CON 126.475 363.8	UNICOM 122.8 (CTAF)	123.3
------------------------	--	-------------------------------	--------------



Visual Segment - Obstacles.				
ASEDEY	GICNE	HEKLE	RW08	INNEZ
2000	1700	1100		2000
3 NM			2 NM	3.2 NM
CATEGORY	A	B	C	D
LP MDA	660-1	610 (700-1)		NA
LNAV MDA	660-1	610 (700-1)		NA
CIRCLING	660-1	607 (700-1)		NA



NE-2, 13 JUN 2024 to 11 JUL 2024

NE-2, 13 JUN 2024 to 11 JUL 2024