

WAAS CH <b>42615</b> <b>W15A</b>	APP CRS <b>146°</b>	Rwy Idg TDZE Apt Elev <b>4000</b> <b>1025</b> <b>1025</b>
--	------------------------	--

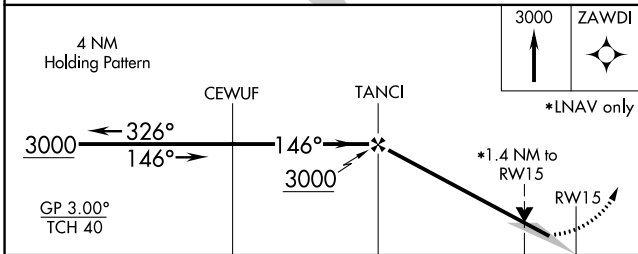
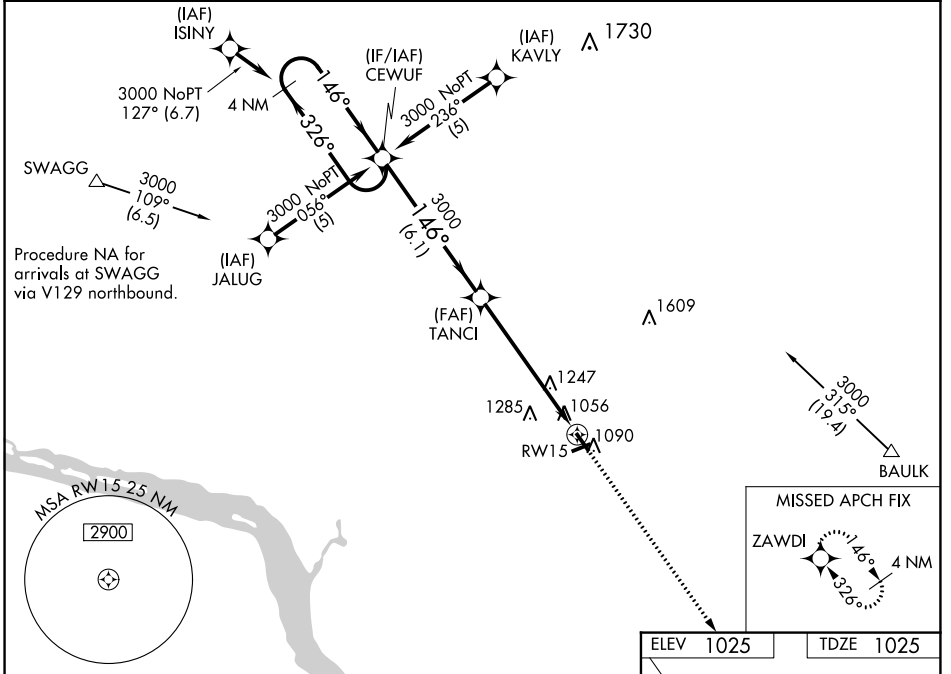
# RNAV (GPS) RWY 15

PLATTEVILLE MUNI (PVB)

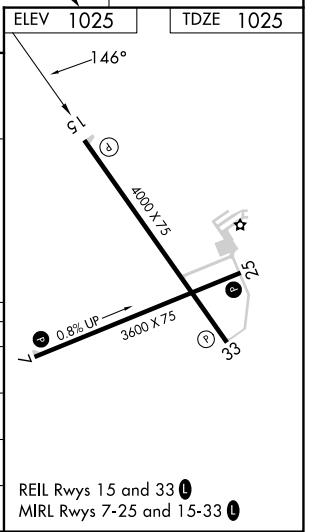
**⚠** For uncompensated Baro-VNAV systems, LNAV/VNAV NA below -17°C (2°F) or above 54°C (130°F).  
**⚠** DME/DME RNP-0.3 NA. When local altimeter setting not received, use Dubuque altimeter setting and increase LPV DA to 1331 feet; increase LNAV/VNAV DA to 1394 feet and all Cats visibilities ¼ SM; increase all MDAs 60 feet, increase LNAV and Circling Cat C visibility ¼ SM. Baro-VNAV and VDP NA when using Dubuque altimeter setting.

**MISSED APPROACH:** Climb to 3000 direct ZAWDI and hold.

AWOS-3 <b>120.575</b>	CHICAGO CENTER <b>133.95 281.4</b>	UNICOM <b>122.7 (CTAF) 0</b>
--------------------------	---------------------------------------	---------------------------------



CATEGORY	A	B	C	D
LPV DA		1275-1 250 (300-1)		NA
LNAV/VNAV DA		1338-1 313 (400-1)		NA
LNAV MDA	1500-1	475 (500-1)	1500-1½ 475 (500-1½)	NA
CIRCLING	1500-1 475 (500-1)	1600-1 575 (600-1)	1600-1½ 575 (600-1½)	NA



EC-3, 13 JUN 2024 to 11 JUL 2024

EC-3, 13 JUN 2024 to 11 JUL 2024