

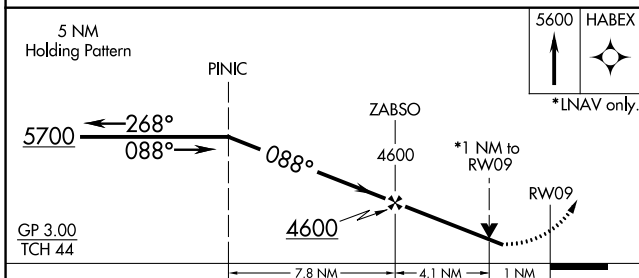
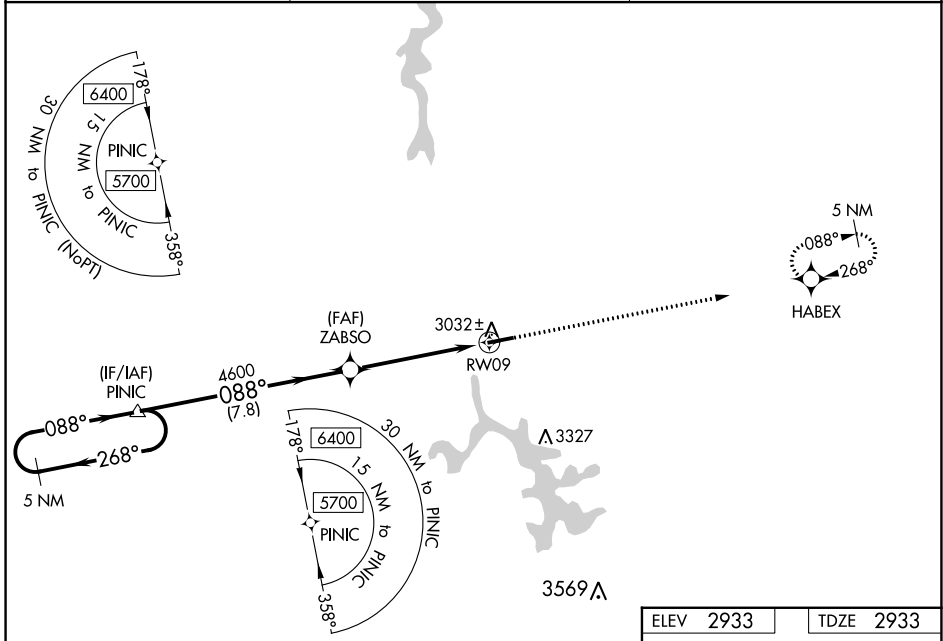
WAAS CH <b>69624</b> <b>W09A</b>	APP CRS <b>088°</b>	Rwy Idg <b>5000</b> TDZE <b>2933</b> Apt Elev <b>2933</b>
--	------------------------	---

**RNAV (GPS) RWY 9**  
GARRETT COUNTY (2G4)

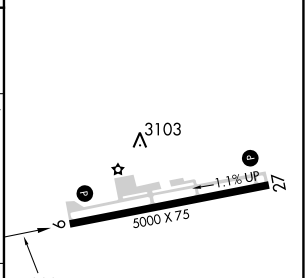
▼ Baro-VNAV and VDP NA when using Morgantown altimeter setting. For uncompensated Baro-VNAV systems, LNAV/VNAV NA below -20° (-4°F) or above 54°C (130°F). Helicopter visibility reduction below ¾ SM NA. DME/DME RNP -0.3 NA. When local altimeter setting not received, use Morgantown altimeter setting and increase all DA and MDA 300 feet. Increase LPV and LNAV/VNAV all Cats visibility 1½ mile, LNAV Cat C visibility ¾ mile and Circling Cat C visibility 1 mile.

▲ NA MISSED APPROACH: Climb to 5600 direct HABEX and hold.

AWOS-3 <b>120.125</b>	CLARKSBURG APP CON ★ <b>119.425 284.65</b>	UNICOM <b>123.0 (CTAF) 0</b>
--------------------------	---	---------------------------------



ELEV <b>2933</b>	TDZE <b>2933</b>
------------------	------------------



CATEGORY	A	B	C	D
LPV DA	3183-¾	250 (300-¾)		NA
LNAV/VNAV DA	3183-¾	250 (300-¾)		NA
LNAV MDA	3300-1	367 (400-1)		NA
CIRCLING	3340-1 407 (500-1)	3400-1 467 (500-1)	3500-1½ 567 (600-1½)	NA

REIL Rwy 9 and 27 0  
MIRL Rwy 9-27 0

NE-3, 13 JUN 2024 to 11 JUL 2024

NE-3, 13 JUN 2024 to 11 JUL 2024