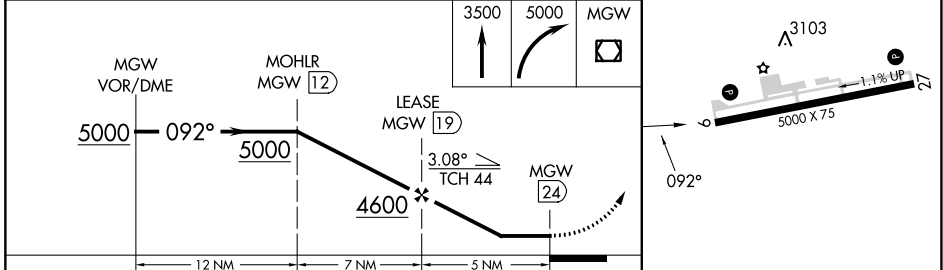
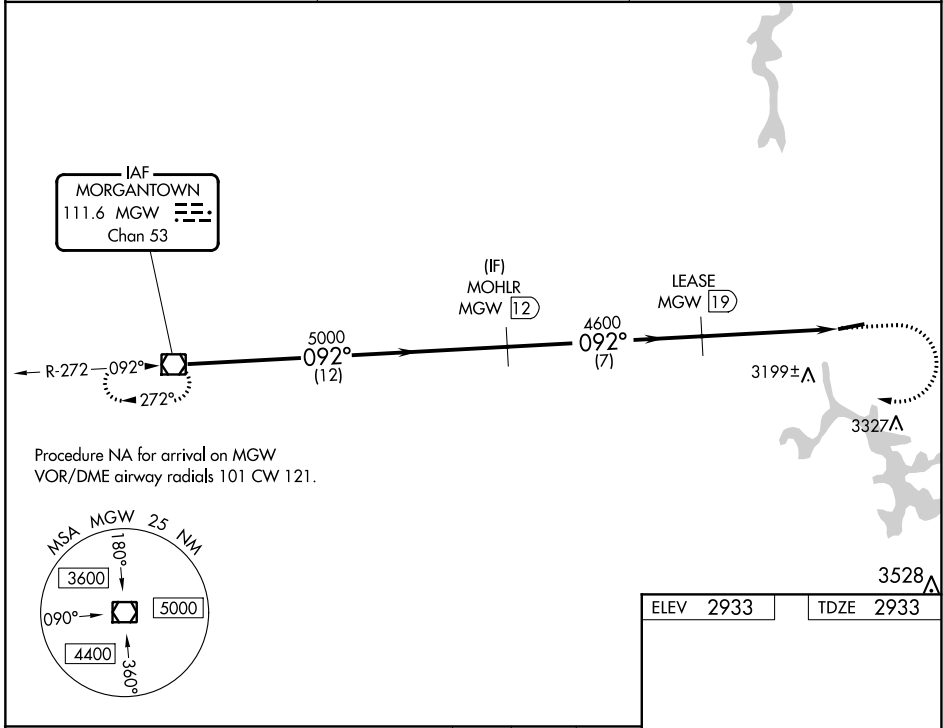


VOR/DME MGW <b>111.6</b> Chan <b>53</b>	APP CRS <b>092°</b>	Rwy Idg TDZE Apt Elev <b>5000</b> <b>2933</b> <b>2933</b>
---	------------------------	--

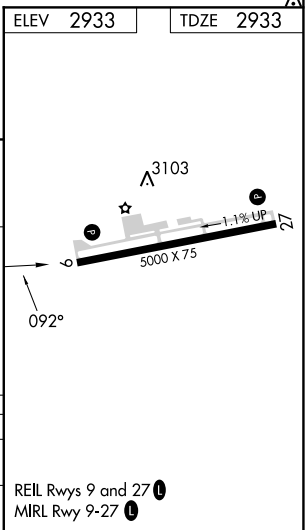
**VOR RWY 9**  
GARRETT COUNTY (2G4)

DME required.	MISSED APPROACH: Climb to 3500 then climbing right turn to 5000 direct MGW VOR/DME and hold.
<p><b>▼</b> Rwy 09 helicopter visibility reduction below 3/4 SM NA. When local altimeter setting not received, use Morgantown altimeter setting and increase all MDA 300 feet; increase S-09 Cat B and Circling Cat A and B visibility 1/4 SM and S-09 and Circling Cat C visibility 1 SM.</p>	

AWOS-3 <b>120.125</b>	CLARKSBURG APP CON * <b>119,425 284,65</b>	UNICOM <b>123.0 (CTAF) 0</b>
--------------------------	---	---------------------------------



CATEGORY	A	B	C	D
S-09	3460-1	527 (600-1)	3460-1 1/2 527 (600-1 1/2)	NA
<b>C</b> CIRCLING	3460-1	527 (600-1)	3500-1 1/2 567 (600-1 1/2)	NA



NE-3, 13 JUN 2024 to 11 JUL 2024

NE-3, 13 JUN 2024 to 11 JUL 2024