

WAAS CH 56306 W22A	APP CRS 218°	Rwy Idg TDZE 315 Apt Elev 316
--	------------------------	---

RNAV (GPS) RWY 22

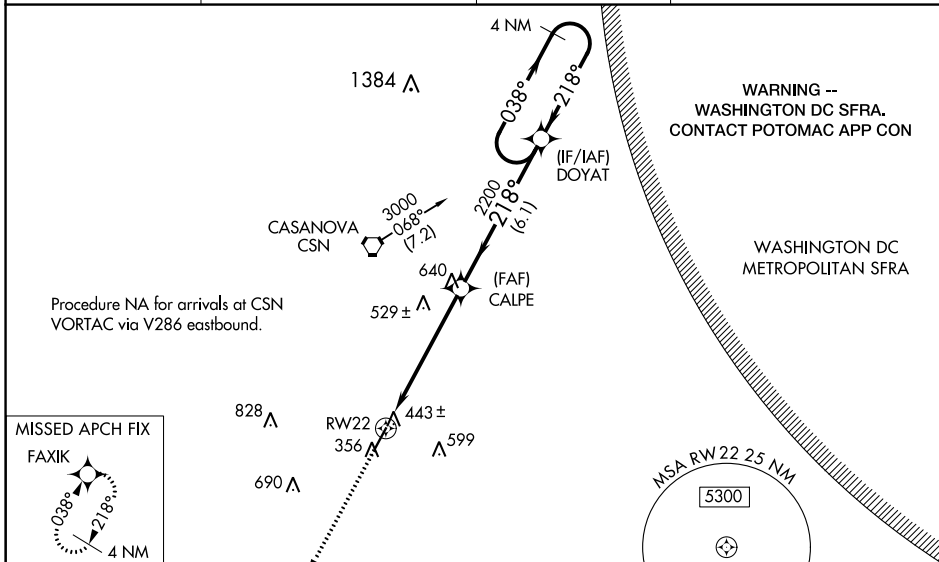
CULPEPER RGNL (CJR)

RNP APCH.

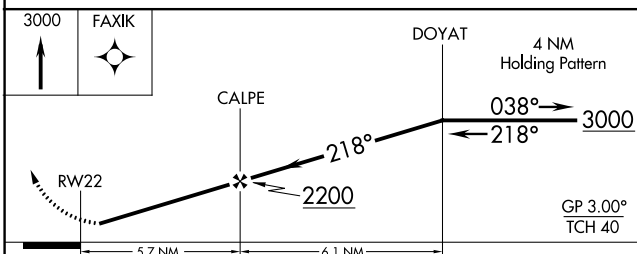
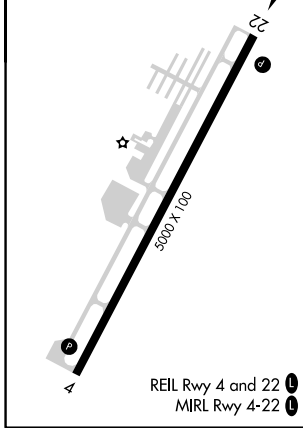
⚠ When VGSI inoperative, procedure NA at night. Baro-VNAV NA when using Washington Dulles Intl altimeter setting. For uncompensated Baro-VNAV systems, LNAV/VNAV NA below -15°C or above 48°C. Rwy 22 helicopter visibility reduction below 1 SM NA. When local altimeter setting not received, use Washington Dulles Intl altimeter setting and increase all DAs/MDAs 80 feet, LPV and LNAV/VNAV all Cats visibility ¼ mile, LNAV Cats C and D visibility ¼ mile.

MISSED APPROACH: Climb to 3000 direct FAXIK and hold.

AWOS-3 119.325	POTOMAC APP CON 128.525 306.925	CLNC DEL 121.6	UNICOM 123.075 (CTAF) Ⓛ
--------------------------	---	--------------------------	-----------------------------------



ELEV 316	TDZE 315
----------	----------



CATEGORY	A	B	C	D
LPV DA	657-1¼		342 (400-1¼)	
LNAV/VNAV DA	703-1½		388 (400-1½)	
LNAV MDA	800-1	485 (500-1)	800-1¼	800-1½
			485 (500-1¼)	485 (500-1½)

NE-3, 13 JUN 2024 to 11 JUL 2024

NE-3, 13 JUN 2024 to 11 JUL 2024