

WAAS CH 77606 W04A	APP CRS 038°	Rwy Idg TDZE 316 Apt Elev 316
----------------------------------------	------------------------	---------------------------------------------------

RNAV (GPS) RWY 4

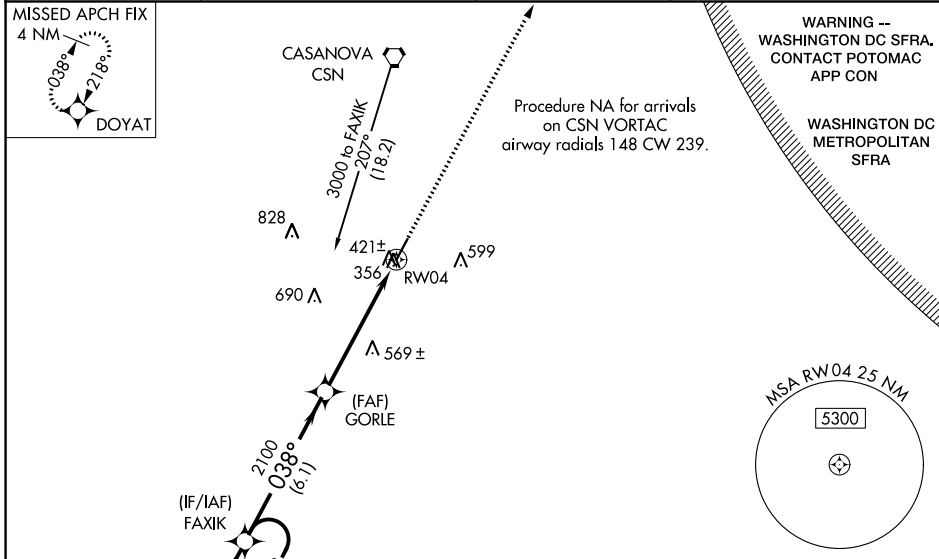
CULPEPER RGNL (CJR)

RNP APCH.

⚠ When VGSI inoperative, procedure NA at night. Baro-VNAV NA when using Washington Dulles Intl altimeter setting. For uncompensated Baro-VNAV systems, LNAV/VNAV NA below -15°C or above 48°C. Rwy 4 helicopter visibility reduction below 1 SM NA. When local altimeter setting not received, use Washington Dulles Intl altimeter setting and increase all DAs 73 feet, all MDAs 80 feet, LPV and LNAV/VNAV all Cats visibility ¼ mile, LNAV Cat D visibility ¼ mile.

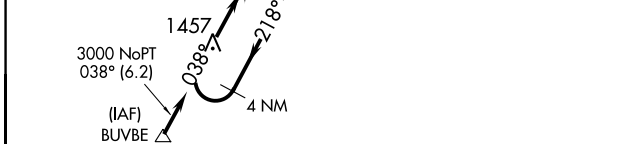
MISSED APPROACH: Climb to 3000 direct DOYAT and hold.

AWOS-3 119.325	POTOMAC APP CON 128.525 306.925	CLNC DEL 121.6	UNICOM 123.075 (CTAF)
--------------------------	-------------------------------------------	--------------------------	---------------------------------

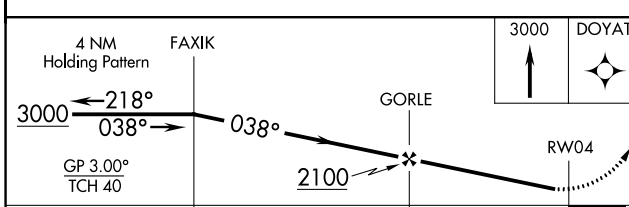


NE-3, 13 JUN 2024 to 11 JUL 2024

NE-3, 13 JUN 2024 to 11 JUL 2024



ELEV 316	TDZE 316
REIL Rwy 4 and 22	MIRL Rwy 4-22



CATEGORY	A	B	C	D
LPV DA	610-1 294 (300-1)			
LNAV/VNAV DA	833-1¾ 517 (600-1¾)			
LNAV MDA	820-1	504 (600-1)	820-1½	504 (600-1½)

